



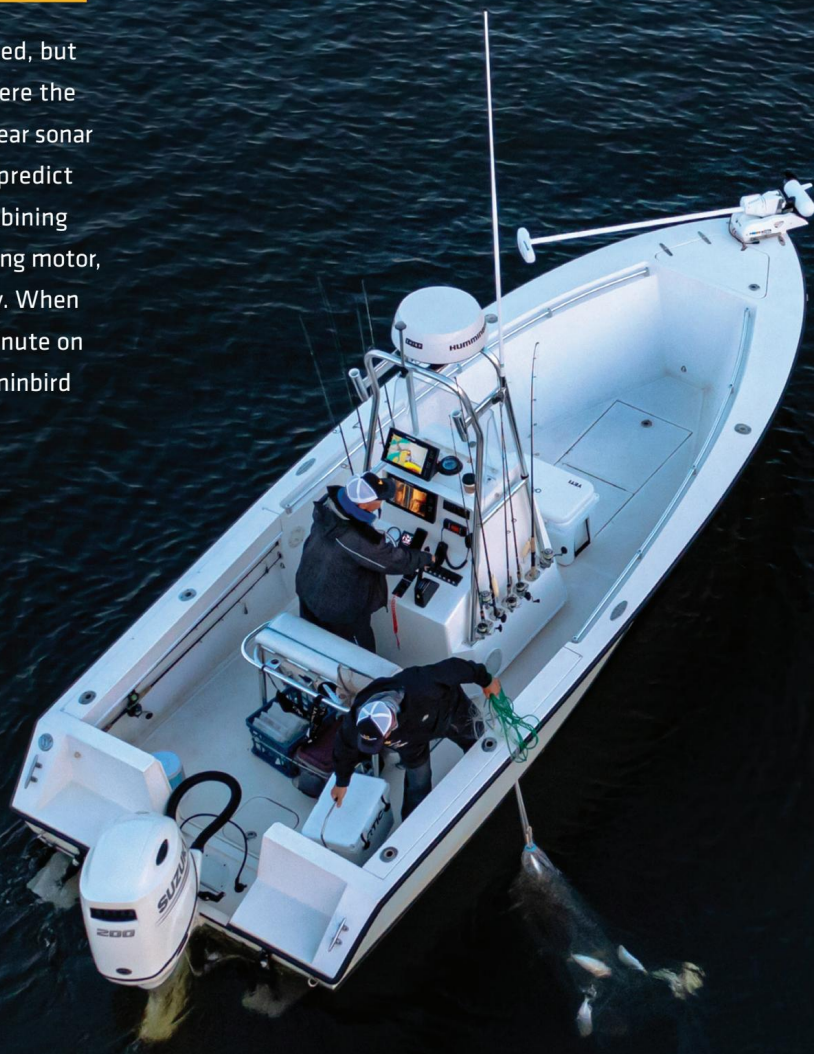
2023 HUMMINBIRD PRODUCTS

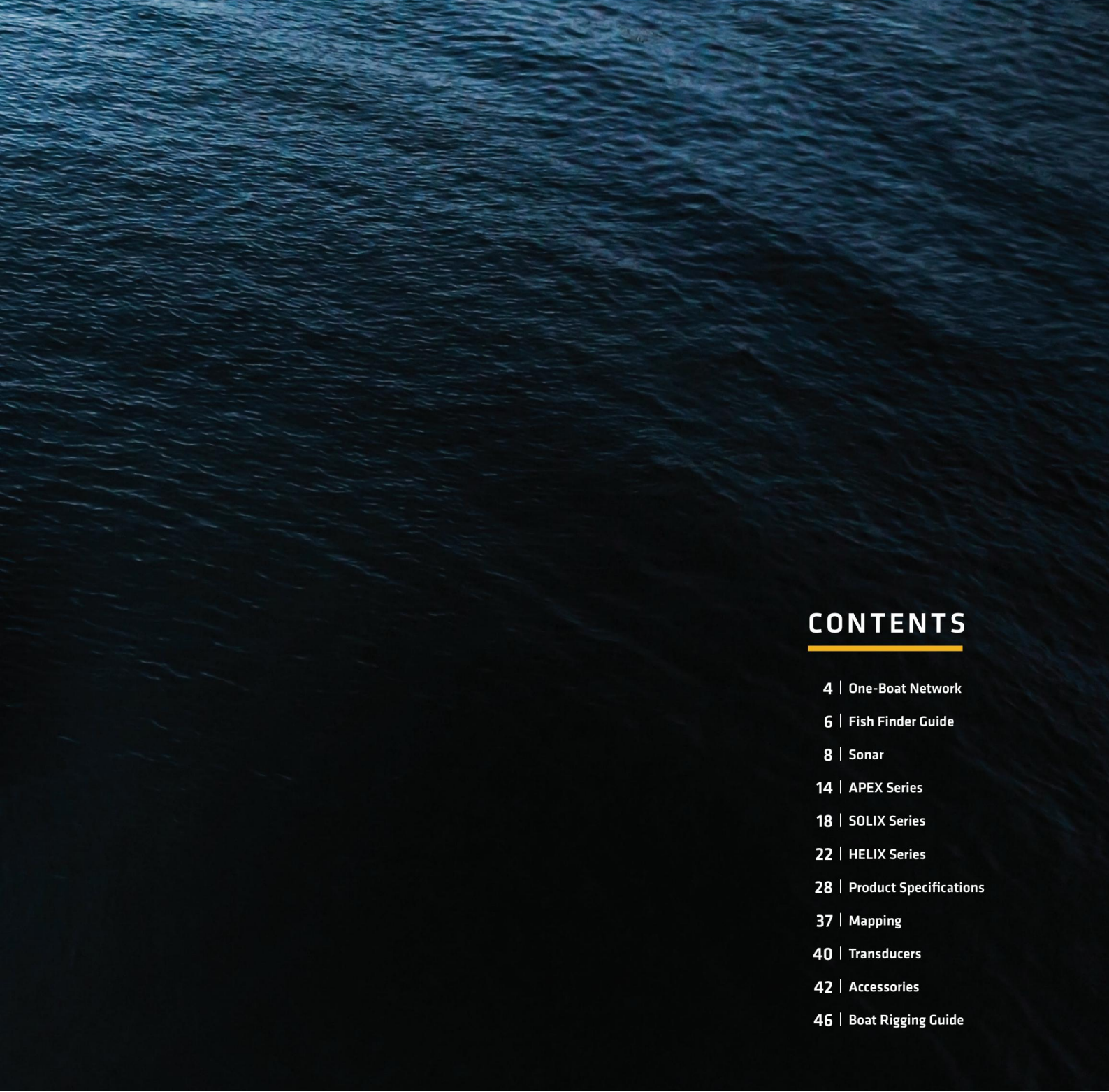


# FISH SMARTER, NOT HARDER.

---

Your passion for fishing might be unlimited, but your time and energy are not. Focus where the fish are with Humminbird®. Our crystal-clear sonar and precise charting tools will help you predict where the next bite will be. And by combining your Humminbird with a Minn Kota® trolling motor, you can get and stay there automatically. When it comes to making the most of every minute on saltwater, great minds think alike: Humminbird is Simply. Clearly. Better.





## CONTENTS

---

- 4 | One-Boat Network
- 6 | Fish Finder Guide
- 8 | Sonar
- 14 | APEX Series
- 18 | SOLIX Series
- 22 | HELIX Series
- 28 | Product Specifications
- 37 | Mapping
- 40 | Transducers
- 42 | Accessories
- 46 | Boat Rigging Guide

# WELCOME TO THE ONE-BOAT NETWORK

Humminbird, Minn Kota and Cannon® share more than just a physical address. We share a passion for fishing and a mission to craft gear that lets you enjoy your time on the water even more. That's why we created the One-Boat Network®: a commitment to make the most advanced fishing gear even better, by making it work together. Our engineering teams constantly look for ways our products can seamlessly integrate and communicate, unlocking more features, capabilities and potential for anglers everywhere.



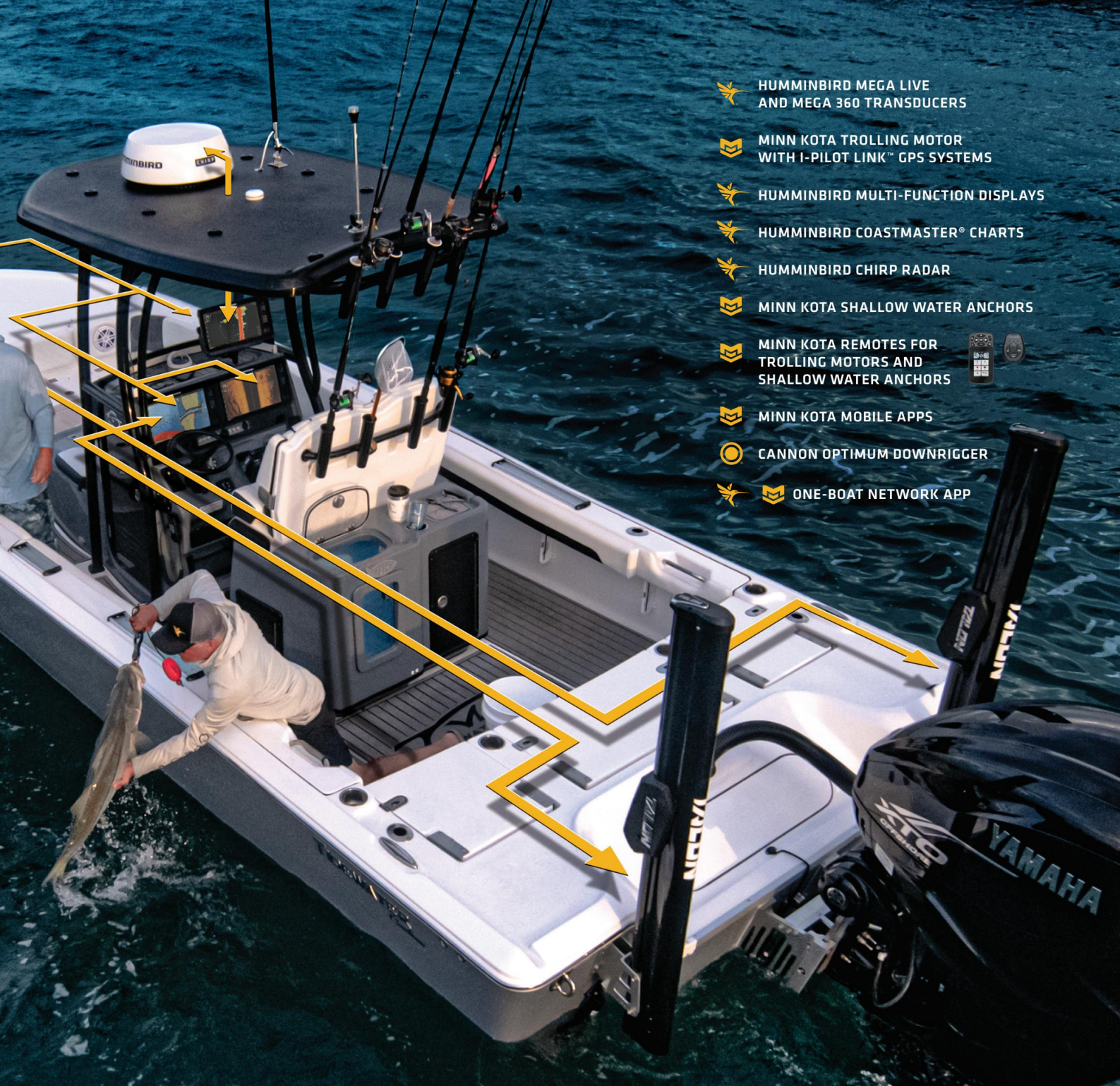
#### AUTOMATIC NAVIGATION













Focus on fishing, and let your Humminbird do the rest. From your fish finder, select a depth contour (or the shoreline) and activate Follow. Your motor will kick in, find the contour and automatically run your boat along it.



#### TROLLING MOTOR CONTROL

Mind over motor. Direct from your Humminbird unit, take command of your trolling motor to easily steer, engage Spot-Lock® and even stow or deploy an Ulterra® motor with a touch of the Humminbird display.

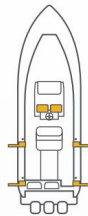


-  HUMMINBIRD MEGA LIVE AND MEGA 360 TRANSDUCERS
-  MINN KOTA TROLLING MOTOR WITH I-PILOT LINK™ GPS SYSTEMS
-  HUMMINBIRD MULTI-FUNCTION DISPLAYS
-  HUMMINBIRD COASTMASTER® CHARTS
-  HUMMINBIRD CHIRP RADAR
-  MINN KOTA SHALLOW WATER ANCHORS
-  MINN KOTA REMOTES FOR TROLLING MOTORS AND SHALLOW WATER ANCHORS 
-  MINN KOTA MOBILE APPS
-  CANNON OPTIMUM DOWNRIGGER
-   ONE-BOAT NETWORK APP



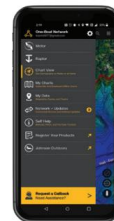
#### INSTANT ANCHORING

Hold it right there. Bluetooth®-capable Humminbird models can communicate wirelessly with Minn Kota Talon and Raptor shallow water anchors to deploy, retract and adjust anchor settings.



#### PRECISION FISHING

Stay on target. Control up to four Cannon Optimum™ downriggers right from your Humminbird display and control downrigger operations and settings either together or individually.



#### SMARTPHONE CONTROL

Access your Humminbird and Minn Kota from your mobile device to unlock more functionality and control. New in 2023, the One-Boat Network App is your all-in-one source for software updates, customer service needs and more.

# SELECTION GUIDE

For a complete look at the Humminbird lineup, this is your guide. If you'd prefer that we make a recommendation based on your specific fishing needs, scan the QR code and use our Fish Finder Selection tool.



## BUILT-IN FEATURES

Touch Screen	Wi-Fi	Bluetooth	Ethernet Networking	Dual Port Ethernet	Dual Channel CHIRP Sonar	NMEA 2000®	HDMI In/Out	GPS	Basemap & AutoChart® Live
--------------	-------	-----------	---------------------	--------------------	--------------------------	------------	-------------	-----	---------------------------

	Model	Display	Part Number	Touch Screen	Wi-Fi	Bluetooth	Ethernet Networking	Dual Port Ethernet	Dual Channel CHIRP Sonar	NMEA 2000®	HDMI In/Out	GPS	Basemap & AutoChart® Live	
<b>APEX</b> <small>NETWORKING</small> 	MEGA SI MODELS	APEX 19 • MSI+ Chartplotter	18.5"   Full HD 1920x1080	411240-1	✓	✓	✓	✓	✓	✓	✓	✓	✓	
		APEX 19 • MSI+ Chartplotter (CHO)	18.5"   Full HD 1920x1080	411240-1CHO										
		APEX 16 • MSI+ Chartplotter	15.6"   Full HD 1920x1080	411500-1	✓	✓	✓	✓	✓	✓	✓	✓	✓	✓
		APEX 16 • MSI+ Chartplotter (CHO)	15.6"   Full HD 1920x1080	411500-1CHO										
		APEX 13 • MSI+ Chartplotter	13.3"   Full HD 1920x1080	411470-1	✓	✓	✓	✓	✓	✓	✓	✓	✓	✓
		APEX 13 • MSI+ Chartplotter (CHO)	13.3"   Full HD 1920x1080	411470-1CHO										

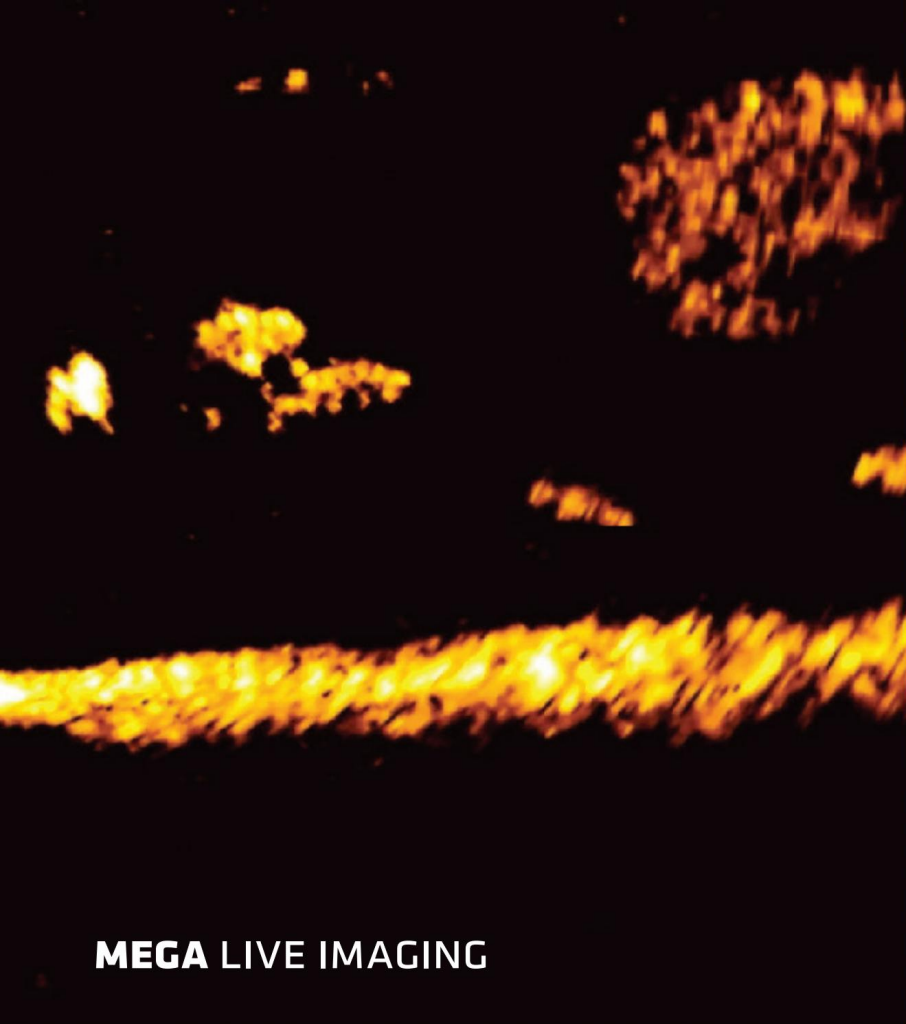
<b>SOLIX</b> <small>NETWORKING</small> 	MEGA SI MODELS	SOLIX 15 • MEGA SI+ GPS G3	15.4"   HD 1280x800	411570-1	✓	✓	✓	✓	✓	✓	✓	✓	✓	
		SOLIX 15 • MEGA SI+ GPS G3 (CHO)	15.4"   HD 1280x800	411570-1CHO										
		SOLIX 12 • MEGA SI+ GPS G3	12.1"   HD 1280x800	411550-1	✓	✓	✓	✓	✓	✓	✓	✓	✓	✓
		SOLIX 12 • MEGA SI+ GPS G3 (CHO)	12.1"   HD 1280x800	411550-1CHO										
		SOLIX 10 • MEGA SI+ GPS G3	10.1"   HD 1280x800	411530-1	✓	✓	✓	✓	✓	✓	✓	✓	✓	✓
		SOLIX 10 • MEGA SI+ GPS G3 (CHO)	10.1"   HD 1280x800	411530-1CHO										

<b>HELIX</b> <small>NETWORKING</small> 	MEGA SI MODELS	HELIX 15 • MEGA SI+ GPS G4N	15.1"   HD 1280x800	411320-1										
		HELIX 15 • MEGA SI+ GPS G4N (CHO)	15.1"   HD 1280x800	411320-1CHO										
		HELIX 12 • MEGA SI+ GPS G4N	12.1"   HD 1280x800	411450-1	✓	✓	✓	✓	✓	✓	✓	✓	✓	✓
		HELIX 12 • MEGA SI+ GPS G4N (CHO)	12.1"   HD 1280x800	411450-1CHO										
		HELIX 10 • MEGA SI+ GPS G4N	10.1"   HD 1024x600	411420-1	✓	✓	✓	✓	✓	✓	✓	✓	✓	✓
		HELIX 10 • MEGA SI+ GPS G4N (CHO)	10.1"   HD 1024x600	411420-1CHO										
		HELIX 9 • MEGA SI+ GPS G4N	9"   HD 1024x600	411380-1	✓	✓	✓	✓	✓	✓	✓	✓	✓	✓
		HELIX 9 • MEGA SI+ GPS G4N (CHO)	9"   HD 1024x600	411380-1CHO										
		HELIX 8 • MEGA SI+ GPS G4N	8"   HD 1024x600	411350-1	✓	✓	✓	✓	✓	✓	✓	✓	✓	✓
		HELIX 8 • MEGA SI+ GPS G4N (CHO)	8"   HD 1024x600	411350-1CHO										
<b>HELIX</b> <small>NETWORKING</small> 	MEGA DI MODELS	HELIX 15 • MEGA DI+ GPS G4N (CHO)	15.1"   HD 1280x800	411310-1CHO										
		HELIX 12 • MEGA DI+ GPS G4N	12.1"   HD 1280x800	411440-1	✓	✓	✓	✓	✓	✓	✓	✓	✓	✓
		HELIX 12 • MEGA DI+ GPS G4N (CHO)	12.1"   HD 1280x800	411440-1CHO										
		HELIX 10 • MEGA DI+ GPS G4N	10.1"   HD 1024x600	411410-1	✓	✓	✓	✓	✓	✓	✓	✓	✓	✓
		HELIX 10 • MEGA DI+ GPS G4N (CHO)	10.1"   HD 1024x600	411410-1CHO										
		HELIX 9 • MEGA DI+ GPS G4N	9"   HD 1024x600	411370-1	✓	✓	✓	✓	✓	✓	✓	✓	✓	✓
		HELIX 9 • MEGA DI+ GPS G4N (CHO)	9"   HD 1024x600	411370-1CHO										
		HELIX 8 • MEGA DI GPS G4N	8"   HD 1024x600	411340-1	✓	✓	✓	✓	✓	✓	✓	✓	✓	✓
		HELIX 8 • MEGA DI GPS G4N (CHO)	8"   HD 1024x600	411340-1CHO										
		HELIX 7 • MEGA DI GPS G4N	7"   HD 1024x600	411640-1	✓	✓	✓	✓	✓	✓	✓	✓	✓	✓
HELIX 7 • MEGA DI GPS G4N (CHO)	7"   HD 1024x600	411640-1CHO												
<b>HELIX</b> <small>NETWORKING</small> 	CHIRP MODELS	HELIX 12 • CHIRP GPS G4N	12.1"   HD 1280x800	411430-1	✓	✓	✓	✓	✓	✓	✓	✓	✓	
		HELIX 10 • CHIRP GPS G4N	10.1"   HD 1024x600	411400-1	✓	✓	✓	✓	✓	✓	✓	✓	✓	✓
		HELIX 9 • CHIRP GPS G4N	9"   HD 1024x600	411360-1	✓	✓	✓	✓	✓	✓	✓	✓	✓	✓
		HELIX 8 • CHIRP GPS G4N	8"   HD 1024x600	411330-1	✓	✓	✓	✓	✓	✓	✓	✓	✓	✓
		HELIX 7 • CHIRP GPS G4N	7"   HD 1024x600	411630-1	✓	✓	✓	✓	✓	✓	✓	✓	✓	✓

<b>HELIX</b> <small>NON-NETWORKING</small>	MEGA SI & SI MODELS	HELIX 7 • MEGA SI GPS G4	7"   HD 1024x600	411620-1								✓	✓	
		HELIX 7 • CHIRP SI GPS G4	7"   HD 1024x600	411590-1									✓	✓
<b>HELIX</b> <small>NON-NETWORKING</small>	MEGA DI & DI MODELS	HELIX 7 • MEGA DI GPS G4	7"   HD 1024x600	411610-1								✓	✓	
		HELIX 5 • CHIRP DI GPS G3	5"   HD 800x480	411670-1									✓	✓
		HELIX 5 • DI G2	5"   HD 800x480	410200-1										
<b>HELIX</b> <small>NON-NETWORKING</small>	CHIRP MODELS	HELIX 5 • CHIRP GPS G3	5"   HD 800x480	411660-1								✓	✓	
		HELIX 5 • CHIRP GPS G3 (PT)	5"   HD 800x480	411680-1									✓	✓
<b>HELIX</b> <small>NON-NETWORKING</small>	DUALBEAM MODELS	HELIX 5 • SONAR G2	5"   HD 800x480	410190-1										

CHO = Control Head Only (Transducer not included) | PT = Portable (Includes carry case and battery)





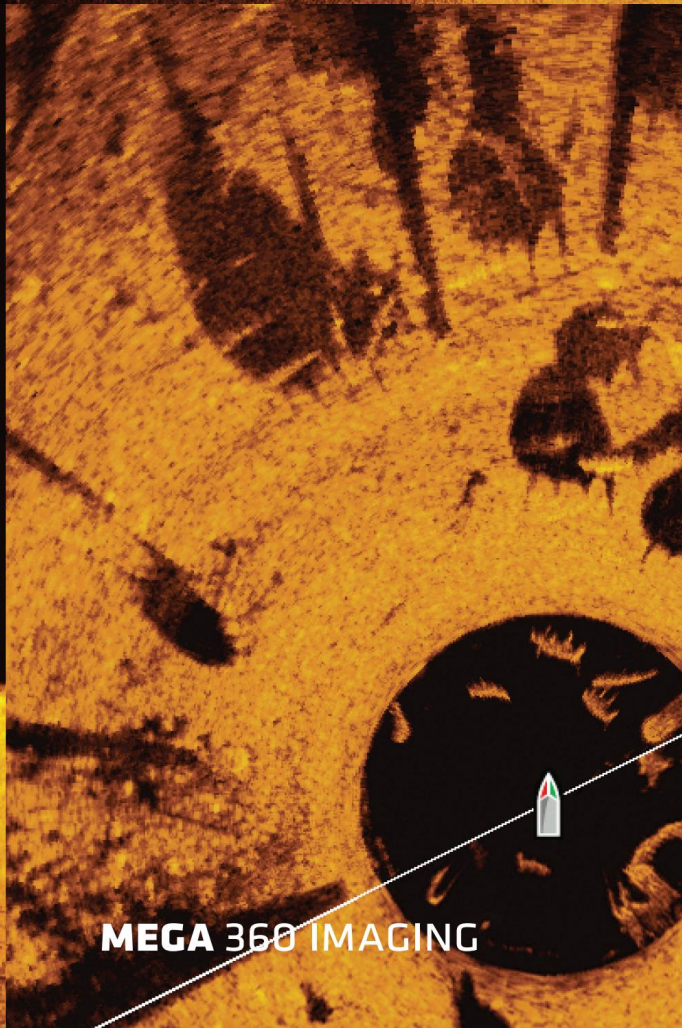
**MEGA LIVE IMAGING**



**MEGA SIDE IMAGING**



**MEGA DOWN IMAGING**



**MEGA 360 IMAGING**





# BRING FISH INTO FOCUS.

How well do you know the waters you fish? Not as well as you might think. From coast to coast, more anglers are finding fish they didn't know were there, thanks to the clarity of MEGA Imaging, pioneered by Humminbird and built into APEX, SOLIX and select HELIX Series models. Using this high-frequency sonar, you can easily distinguish baitfish from gamefish, see the direction fish are facing and even target individual species. Choose MEGA Side Imaging for an incredible view to the left and right of your boat. Opt for MEGA Down Imaging for a crystal-clear picture below your boat. Put yourself at the center of the underwater scene with MEGA 360 Imaging, revealing every detail in every direction. Or, for must-watch detail and non-stop action, switch on MEGA Live Imaging and see a real-time view of what's below and around your boat. With MEGA Imaging, the options are endless, and if you're crafty enough, your fishing streak can be, too.

HUMMINBIRD

# MEGA IMAGING



SCAN TO SEE  
MEGA LIVE  
IN ACTION

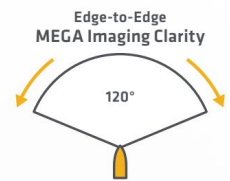


## MEGA LIVE IMAGING®

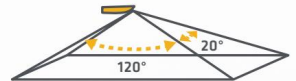
It's showtime. We've expanded the performance of our MEGA Imaging technology with the introduction of MEGA Live Imaging. This sonar technology delivers the clarity of MEGA Imaging in live action, allowing you to see fish and the rest of the underwater world in incredible detail, even watching fish as they move in to bite your lure. MEGA Live Imaging views are provided by an accessory transducer that is compatible with all APEX, SOLIX and select HELIX models.

### COMPATIBLE MODELS

» APEX (all models) | SOLIX (all models) | HELIX 7-15 G4N (MEGA Imaging models) | HELIX 8-12 G3N (MEGA Imaging models)

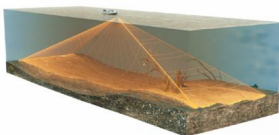


OPTIMAL BEAM WIDTH  
to Maximize Fishability



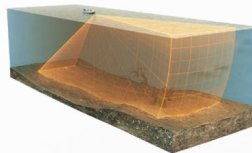
### DOWN MODE

Watch it all go down. This transducer angle is ideal for seeing detailed images of structure and fish swimming underneath your boat, allowing you to easily drop them a line.



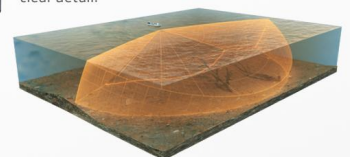
### FORWARD MODE

Now here's something to look forward to. Great for looking and casting out ahead and around your boat, making lure presentation more precise.



### LANDSCAPE MODE

Keep a sharp lookout. Perfect for gathering intel in shallow water, this transducer angle makes full use of your widescreen display to show you what's ahead of your boat in clear detail.

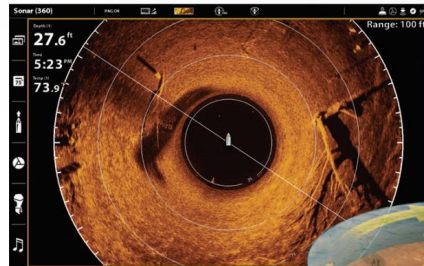


## MEGA 360 IMAGING®

Surround yourself with more detail than ever before. MEGA 360 Imaging sweeps up to 125 feet in every direction around your boat to deliver the clearest images you've ever seen of structure, the bottom and fish, even while you're sitting still. That means more accurate casts, more unforgettable moments and more incredible MEGA Imaging—all around.

### COMPATIBLE MODELS

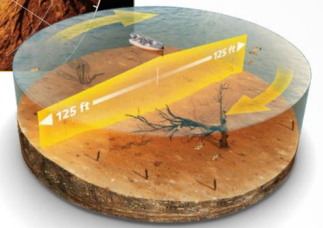
- » APEX (all models) | SOLIX G2/G3 models
- » HELIX 8-15 G4N (MEGA Imaging+ models)
- » HELIX 8-12 G3N (MEGA Imaging+ models)



SCAN TO SEE VIDEO



An optional accessory available for select models, the MEGA 360 Imaging transducer beam reveals a circular area with a radius of 125 feet.

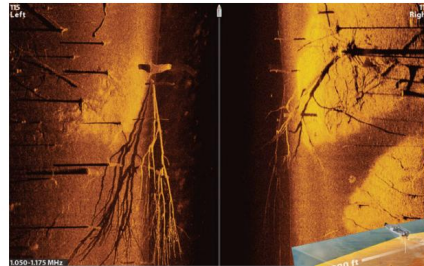


## MEGA SIDE IMAGING®

Humminbird Side Imaging uses an ultra-thin beam to take a “sonar snapshot” of the area to the left and right of your location. The return image for this slice is then added to the images taken immediately before and after to build an incredibly detailed view of the bottom. The dark, center portion of the screen represents the column of water below your boat. The lighter portions on the far left and right of the screen show you the bottom below and to the left and right of your boat. Keep in mind, Side Imaging is a record of the water and terrain your boat has already passed over. Structure will appear as a clearly defined bright shape with an adjacent dark sonar “shadow.” Generally, long shadows indicate the object is tall and small shadows indicate something short.

### COMPATIBLE MODELS

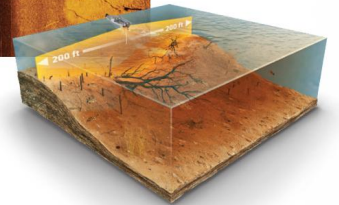
- » APEX (MEGA Imaging+ models) | SOLIX G2/G3 (MEGA Imaging+ models)
- » HELIX 8-15 G4N (MEGA Imaging+ models) | HELIX 7 G4/G4N (MEGA Imaging models)



SCAN TO SEE VIDEO



With MEGA Side Imaging (available on select models), you'll be able to see clearly at least 200 feet on either side.

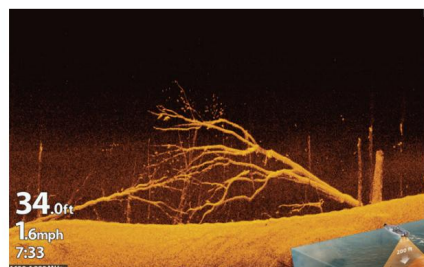


## MEGA DOWN IMAGING®

Like MEGA Side Imaging, Humminbird Down Imaging uses a razor-thin, high-frequency beam to create picture-like images of structure, vegetation and fish. But unlike MEGA Side Imaging, Down Imaging returns are oriented identically to traditional, down-looking sonar returns—with the most-recent information appearing on the right side of the screen.

### COMPATIBLE MODELS

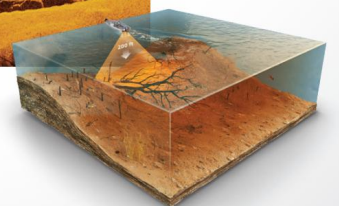
- » APEX (MEGA Imaging+ models) | SOLIX G2/G3 (MEGA Imaging+ models)
- » HELIX 9-15 G4N (MEGA Imaging+ models)
- » HELIX 7 G4/G4N and HELIX 8 G4N (MEGA Imaging models)



SCAN TO SEE VIDEO



With MEGA Down Imaging (available on select models), you'll be able to see clearly at least 200 feet under your boat.

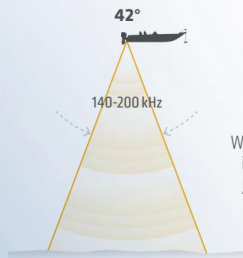


HUMMINBIRD

# DUAL SPECTRUM

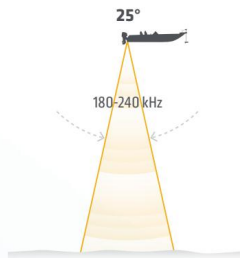
## BEGIN YOUR SEARCH WITH BETTER HARDWARE.

Don't let the pretty pictures fool you. Our proprietary, Low Q CHIRP transducer is the real hero. Using more coverage to detect fish, structure and the bottom, this workhorse makes possible the highly defined fish arches and clear target separation of Dual Spectrum CHIRP Sonar. Ounce for ounce, pulse for pulse, it's the best sonar in its class. No contest. Available on APEX, SOLIX and select HELIX models.



### WIDE MODE Maximum Coverage

Search far and wide. Opt for Wide Mode when vertical jigging, in shallow water or when you just want to see a wider view of the world below.



### NARROW MODE Maximum Detail

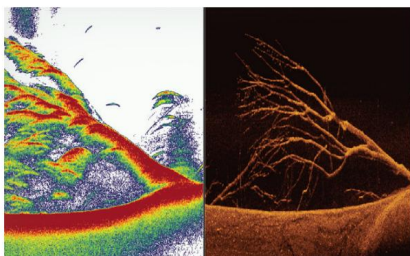
Hone in on the small stuff that makes a big difference. Narrow Mode lets you target individual fish, or separate fish from structure and the bottom with laser precision.



# CHIRP

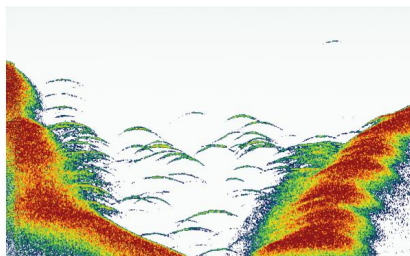
## STRONG RETURNS WITHOUT NOISE

Stop seeing things that aren't there. A high signal-to-noise ratio translates to better defined targets, less clutter and greater certainty that what you're looking at on-screen is legit.



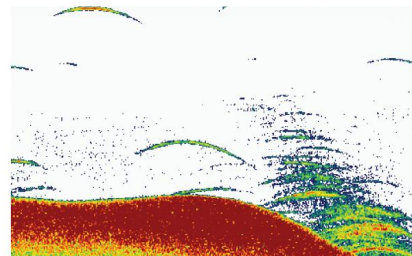
## SUPERIOR TARGET SEPARATION

Separating fish from their habitat is the name of the game. And now, you'll be able to more easily tell the difference between bait and game fish, and nearby structure and vegetation.



## CLEARLY DEFINED FISH ARCHES

We've got bad news for your arch nemesis. Large game fish will show up on your screen as long, well-defined arches, for quick identification and accurate lure presentation.



## DUAL CHANNEL SONAR SUPPORT

It's our job to give you every possible advantage as an angler. For deep water, pelagic applications, Humminbird is proud to offer Dual Channel Sonar Support for Airmar® accessory transducers with the APEX Series, in addition to industry-leading MEGA Side Imaging+, MEGA Down Imaging+ and Dual Spectrum CHIRP sonar standard. With even more performance from a dedicated sonar channel for up to 2kW, plus integrated transducer ID for fast and easy setup, you'll see pristine Airmar CHIRP returns on your APEX display at depths as much as 3,500 feet. Visit [Airmar.com](http://Airmar.com) for more information.



# APEX SERIES

## CLARITY HAS REACHED A NEW PEAK.

Welcome to the top. The APEX Series delivers the clearest view of sonar and charts to hit saltwater. Know exactly what's under and around your boat, viewing fish, structure, surroundings and points of interest on the crystal-clear, full-HD screen. Add the power of advanced networking features like NMEA 2000®, Dual Ethernet ports and the One-Boat Network to unlock even more fish-finding and boat-control capabilities. Built specifically for serious anglers, the APEX Series can help take your fishing success to the next level.



# APEX SERIES

FULL-HD DISPLAY  
1920x1080

CROSS TOUCH  
INTERFACE

DUAL CORE  
PROCESSOR

## CONNECTIVITY

Ethernet (Dual Ports)  
Bluetooth®  
Wi-Fi  
HTML5  
NMEA 2000  
HDMI Video In/Out  
CZONE Digital  
Switching  
CHIRP Radar  
AIS  
VHF Radio

## SONAR

MEGA Imaging+®  
Dual Spectrum CHIRP  
Dual Channel  
CHIRP Sonar  
MEGA 360 Imaging\*  
MEGA Live Imaging\*

## GPS/CHARTS

Built-In GPS  
Humminbird BaseMap  
AutoChart Live  
LakeMaster®\*  
CoastMaster\*  
Navionics\*



ONE-BOAT  
NETWORK®

\*Compatible



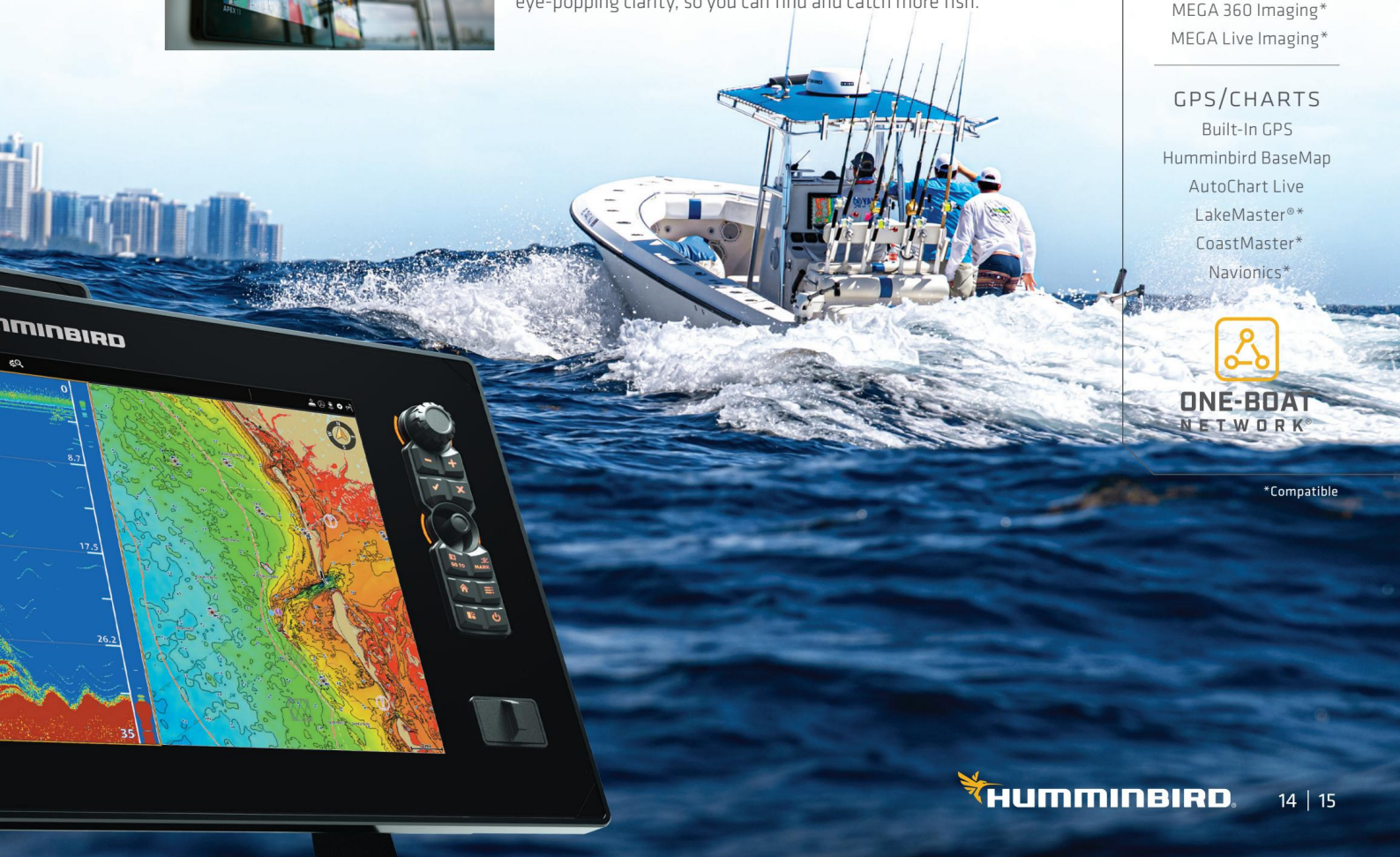
## SEAMLESS FISHING

Rig your boat to give yourself the ultimate advantage on the water. The APEX Series provides advanced networking options you would expect, plus premium options like Dual Channel CHIRP Sonar, dual Ethernet ports, HDMI video input/outputs, HTML5 and CZONE® digital switching support. With the option to customize screen combinations and data readouts, you can take full advantage of your fully connected fishing machine.



## LOOK SHARP

The slim-fit, full-HD Cross Touch® display of the APEX Series offers a crystal-clear view of what's below. And with multiple in-dash mounting options, its sleek design will look just as sharp on your helm. From sonar to navigation to vessel information, the full-HD screen brings every detail to life with eye-popping clarity, so you can find and catch more fish.



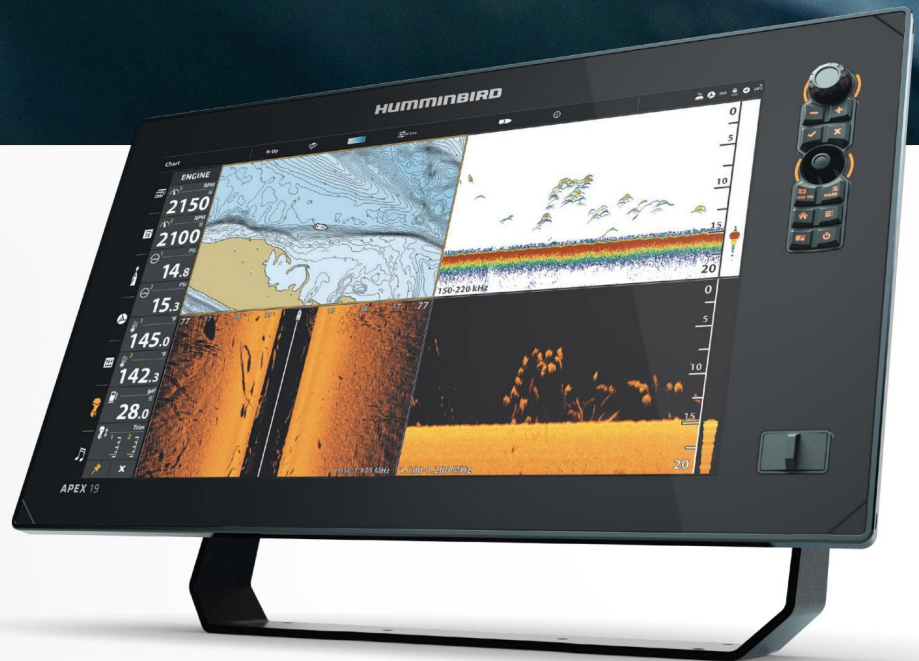


# APEX SERIES

NETWORKING



APEX Series is part  
of the One-Boat Network  
(See page 4).



**FULL HD**  
1920x1080  
DISPLAY

**CROSS TOUCH**  
INTERFACE

**MEGA SIDE**  
IMAGING+

**MEGA DOWN**  
IMAGING+

**DUAL SPECTRUM**  
CHIRP

**DUAL CHANNEL**  
CHIRP SONAR

**PRECISION**  
GPS

**HUMMINBIRD**  
BASEMAP

**AUTOCHART**  
LIVE

**DUAL PORT**  
ETHERNET

**HDMI**  
IN/OUT

**WI-FI**

**NMEA**  
2000+

BUILT-IN TECHNOLOGIES VARY BY MODEL - SEE PAGE 28

[HUMMINBIRD.COM](http://HUMMINBIRD.COM)

Products shown with optional CoastMaster charts.  
Features and specs are subject to change without notice.





## APEX SERIES | MEGA SI+ CHARTPLOTTER

Feast your eyes. Choose the APEX Series display that best matches your requirements and console dimensions. All APEX models are compatible with the One-Boat Network and offer a full complement of Humminbird sonar and mapping technologies, starting with the incredible clarity of MEGA Side Imaging+.



**APEX 19 MEGA SI+ CHARTPLOTTER**  
 FULL HD 18.5" DISPLAY / 1920H X 1080V  
 #411240-1  
 #411240-1CHO (CONTROL HEAD ONLY)

**APEX 16 MEGA SI+ CHARTPLOTTER**  
 FULL HD 15.6" DISPLAY / 1920H X 1080V  
 #411500-1  
 #411500-1CHO (CONTROL HEAD ONLY)

**APEX 13 MEGA SI+ CHARTPLOTTER**  
 FULL HD 13.3" DISPLAY / 1920H X 1080V  
 #411470-1  
 #411470-1CHO (CONTROL HEAD ONLY)

### CHO MODELS (CONTROL HEAD ONLY)

Want to add a new unit to an existing Humminbird network, or select your own transducer? A CHO model gives you the freedom to choose. View our accessory transducer options, including the MEGA Imaging stainless steel thru-hull, and find the right one for you on pages 40-41.



### AIRMAR CHIRP TRANSDUCERS

The APEX Series is compatible with Airmar's CHIRP-ready transducers and includes Airmar xID for simple configuration and the best possible sonar picture. Trusted by commercial fishermen and tournament anglers everywhere, Airmar will help you find fish at depths that were previously unimaginable. Learn more at [Airmar.com](http://Airmar.com).



ADD-ONS



Humminbird LakeMaster | Humminbird LakeMaster Premium  
 Humminbird CoastMaster | Humminbird CoastMaster Premium  
 Humminbird AutoChart Zero Line | Navionics | Navionics+  
 Navionics HotMaps Platinum | Navionics Platinum+



### ONE-BOAT NETWORK APP COMPATIBLE

Update software, access technical support and unlock even more control using the One-Boat Network app. See more details on page 4.

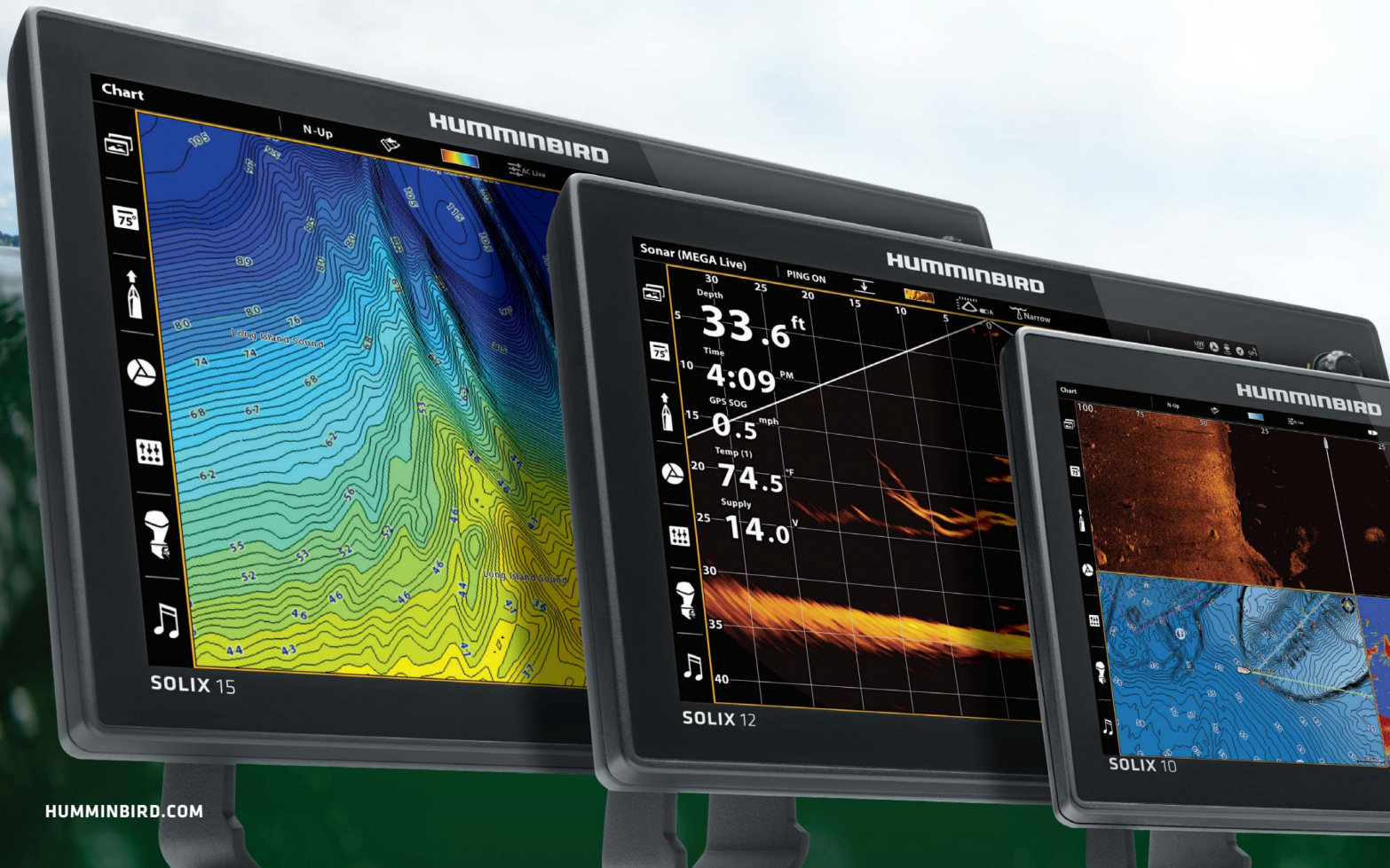


# SOLIX SERIES

G3

MORE IS MORE.

Some anglers expect more—from themselves, from their tackle, from their technology. If that's you, look no further. The SOLIX Series gives you everything you need to dominate the water, with an intuitive interface, all the customization options to make it your own and ultra-responsive performance, thanks to its dual core processor. You'll also have access to some of the biggest innovations on the water, including MEGA Imaging, Dual Spectrum CHIRP, AutoChart Live, Wi-Fi, Bluetooth and NMEA 2000 connectivity. So stop settling for less, and get ready for more.



# SOLIX SERIES

HD DISPLAY  
1280x800

CROSS TOUCH  
INTERFACE

DUAL CORE  
PROCESSOR

## CONNECTIVITY

Ethernet  
Bluetooth  
Wi-Fi  
HTML5  
NMEA 2000  
CZONE Digital  
Switching  
CHIRP Radar  
AIS  
VHF Radio

## SONAR

MEGA Imaging+  
Dual Spectrum CHIRP  
MEGA 360 Imaging\*  
MEGA Live Imaging\*

## GPS/CHARTS

Built-In GPS  
Humminbird BaseMap  
AutoChart Live  
LakeMaster\*  
CoastMaster\*  
Navionics\*



**ONE-BOAT  
NETWORK**

\*Compatible

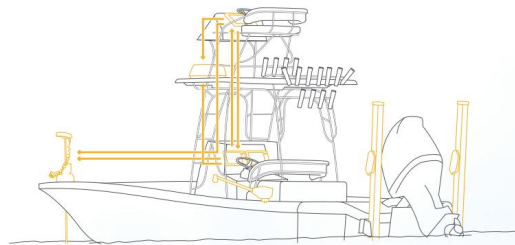


## MAKE SOLIX YOUR OWN

Instantly take command of exclusive technologies like MEGA Imaging, Dual Spectrum CHIRP and AutoChart Live, and customize up to four independent viewing panes to your needs and situation. A customized sidebar provides quick access to your favorite views, navigational data, vessel information and accessories like Minn Kota Talon and i-Pilot Link™. In addition, make SOLIX your own with the ability to customize your home screen wallpaper.

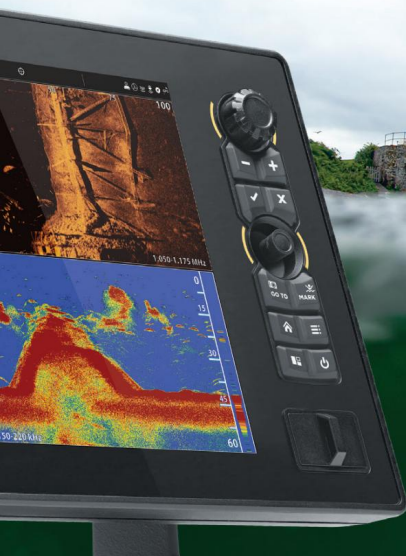
## ADVANCED NETWORKING

Supports Ethernet and Bluetooth for connection to One-Boat Network and includes compatibility for NMEA 2000, Wi-Fi, CZONE, Airmar xID, CHIRP Radar, AIS and VHF accessories.



## CROSS TOUCH

Take command of the display like never before with Cross Touch. Everything you can do with the touchscreen, you can also do with the keypad—so rough conditions will never compromise your control.





# SOLIX SERIES

**G3** NETWORKING



SOLIX Series G3 is part of the One-Boat Network (See page 4).



CROSS TOUCH  
INTERFACE



MEGA SIDE  
IMAGING+



MEGA DOWN  
IMAGING+



DUAL SPECTRUM  
CHIRP



PRECISION  
GPS



HUMMINBIRD  
BASEMAP



AUTOCHART  
LIVE



ETHERNET  
NETWORKING



WI-FI



NMEA  
2000



Bluetooth

BUILT-IN TECHNOLOGIES VARY BY MODEL - SEE PAGE 29

HUMMINBIRD.COM

Products shown with optional LakeMaster charts.  
Features and specs are subject to change without notice.



## SOLIX SERIES | MEGA SI+ · MEGA DI+ · CHIRP · GPS

Size matters. Select the SOLIX Series display that best meets your fishing needs and boat. All SOLIX models are compatible with the One-Boat Network and offer a complete arsenal of Humminbird sonar and mapping technologies, starting with the incredible clarity of MEGA Side Imaging+.



### SOLIX 15 MEGA SI+ GPS

**HD** 15.4" DISPLAY / 1280H X 800V  
#411570-1  
#411570-1CHO (CONTROL HEAD ONLY)

### SOLIX 12 MEGA SI+ GPS

**HD** 12.1" DISPLAY / 1280H X 800V  
#411550-1  
#411550-1CHO (CONTROL HEAD ONLY)

### SOLIX 10 MEGA SI+ GPS

**HD** 10.1" DISPLAY / 1280H X 800V  
#411530-1  
#411530-1CHO (CONTROL HEAD ONLY)

### CHO MODELS (CONTROL HEAD ONLY)

Want to add a new unit to an existing Humminbird network, or select your own transducer? A CHO model gives you the freedom to choose. View our accessory transducer options, including a built-in MEGA Imaging trolling motor from Minn Kota. Find the right one for you on pages 40-41.



### AIRMAR CHIRP TRANSDUCERS

The SOLIX Series is compatible with Airmar's CHIRP-ready transducers and includes Airmar xID for simple configuration and the best possible sonar picture. Trusted by commercial fishermen and tournament anglers everywhere, Airmar will help you find fish at depths that were previously unimaginable. Learn more at Airmar.com.



#### ADD-ONS



Humminbird LakeMaster | Humminbird LakeMaster Premium  
Humminbird CoastMaster | Humminbird CoastMaster Premium  
Humminbird AutoChart Zero Line | Navionics | Navionics+  
Navionics HotMaps Platinum | Navionics Platinum+



#### ONE-BOAT NETWORK APP COMPATIBLE

Update software, access technical support and unlock even more control using the One-Boat Network app. See more details on page 4.



# HELIX SERIES

— G4N + G4 + G3 —

## FISHING RUNS IN THE FAMILY.

Every moment on the water matters. Don't waste a second messing around with your fish finder. The HELIX Series puts you on fish faster with an easy-to-use interface. You'll have innovative technologies at your command with options including MEGA Imaging+, Dual Spectrum CHIRP, AutoChart Live, Ethernet, Bluetooth, Wi-Fi and NMEA 2000 connectivity. Pick your choice of screen size and choose from either the One-Boat Network-compatible HELIX G4N Series, or a standalone HELIX G4/G3 model.

All are ready to fish right out of the box, because at Humminbird, simplicity is in our DNA.



# HELIX SERIES

## HD DISPLAY

1280x800  
15" | 12" models

1024x600  
10" | 9" | 8" | 7" models

800x480  
5" model

## CONNECTIVITY

Ethernet

Bluetooth

Wi-Fi

NMEA 2000

CHIRP Radar

## SONAR

MEGA Imaging+

Dual Spectrum CHIRP

MEGA 360 Imaging\*

MEGA Live Imaging\*

## GPS/CHARTS

Built-In GPS

Humminbird BaseMap

AutoChart Live

LakeMaster\*

CoastMaster\*

Navionics\*

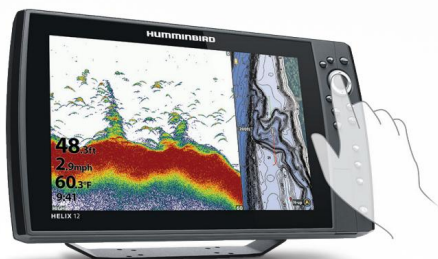
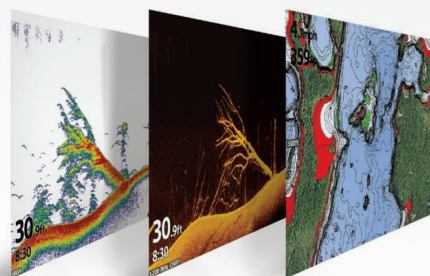


**ONE-BOAT  
NETWORK®**

\*Compatible

## INDUSTRY-LEADING SONAR AND BUILT-IN GPS

See more of what you want with innovative sonar technologies like Dual Spectrum CHIRP (2D) sonar and available MEGA Imaging+. Built-in GPS and Humminbird Basemap will show you the way, with premium chart options from LakeMaster, CoastMaster and Navionics.



## QUICK AND INTUITIVE KEYPAD CONTROL

Master HELIX at the touch of a button. Access the preloaded views from the user-friendly menu system. Soft key controls allow you to reliably operate your fish finder in any condition.



## NETWORKING COMPATIBLE

HELIX G4N Series comes standard with Ethernet networking and Bluetooth, allowing connectivity with other Humminbird fish finders and One-Boat Network products.



**HUMMINBIRD**

22 | 23



# HELIX SERIES



HELIX Series G4N is part of the One-Boat Network (See page 4).

## HELIX SERIES | MEGA SI · MEGA DI · CHIRP · GPS

Get everything, plus the kitchen sink. These HELIX Series models are One-Boat Network compatible and fully stocked with Humminbird innovations, from incredible MEGA Side Imaging on down the line. Choose from a variety of screen sizes to match your fishing needs and boat.



**HELIX 15 MEGA SI+ GPS G4N**  
HD 15.4" DISPLAY / 1280H X 800V  
#411320-1 | #411320-1CHO (CONTROL HEAD ONLY)

**HELIX 12 MEGA SI+ GPS G4N**  
HD 12.1" DISPLAY / 1280H X 800V  
#411450-1 | #411450-1CHO (CONTROL HEAD ONLY)

**HELIX 10 MEGA SI+ GPS G4N**  
HD 10.1" DISPLAY / 1024H X 600V  
#411420-1 | #411420-1CHO (CONTROL HEAD ONLY)

**HELIX 9 MEGA SI+ GPS G4N**  
HD 9" DISPLAY / 1024H X 600V  
#411380-1 | #411380-1CHO (CONTROL HEAD ONLY)

**HELIX 8 MEGA SI+ GPS G4N**  
HD 8" DISPLAY / 1024H X 600V  
#411350-1 | #411350-1CHO (CONTROL HEAD ONLY)

**HELIX 7 MEGA SI GPS G4N**  
HD 7" DISPLAY / 1024H X 600V  
#411650-1



MEGA SIDE IMAGING+



MEGA DOWN IMAGING+



DUAL SPECTRUM CHIRP



PRECISION GPS



HUMMINBIRD BASEMAP



AUTOCHART LIVE



ETHERNET NETWORKING



WI-FI



NMEA 2000



ADD-ONS

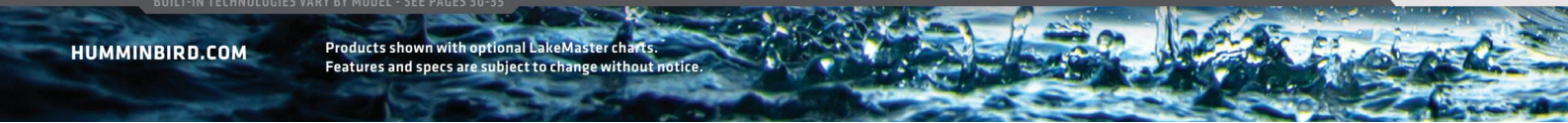


MEGA LIVE IMAGING

BUILT-IN TECHNOLOGIES VARY BY MODEL - SEE PAGES 30-35

HUMMINBIRD.COM

Products shown with optional LakeMaster charts. Features and specs are subject to change without notice.







## HELIX SERIES | MEGA DI · CHIRP · GPS

Look out below. Starting with MEGA Down Imaging, these HELIX Series models offer a clearer view of what's underneath your boat, plus One-Boat Network compatibility and a strong mix of other sonar and mapping technologies. Select the screen size that best matches your needs.



### HELIX 15 MEGA DI+ GPS **G4N**

**HD** 15.4" DISPLAY / 1280H X 800V  
#411310-1CHO (CONTROL HEAD ONLY)

### HELIX 12 MEGA DI+ GPS **G4N**

**HD** 12.1" DISPLAY / 1280H X 800V  
#411440-1 | #411440-1CHO (CONTROL HEAD ONLY)

### HELIX 10 MEGA DI+ GPS **G4N**

**HD** 10.1" DISPLAY / 1024H X 600V  
#411410-1 | #411410-1CHO (CONTROL HEAD ONLY)

### HELIX 9 MEGA DI+ GPS **G4N**

**HD** 9" DISPLAY / 1024H X 600V  
#411370-1 | #411370-1CHO (CONTROL HEAD ONLY)

### HELIX 8 MEGA DI GPS **G4N**

**HD** 8" DISPLAY / 1024H X 600V  
#411340-1 | #411340-1CHO (CONTROL HEAD ONLY)

### HELIX 7 MEGA DI GPS **G4N**

**HD** 7" DISPLAY / 1024H X 600V  
#411640-1 | #411640-1CHO (CONTROL HEAD ONLY)

## HELIX SERIES | CHIRP · GPS

If it's a better view you're after, start here. Offering the impressive detail of Dual Spectrum CHIRP Sonar, these HELIX Series models capture a solid mix of features to help you catch more fish. One-Boat Network compatibility and lots of screen sizes give you plenty of options.



### HELIX 12 CHIRP GPS **G4N**

**HD** 12.1" DISPLAY / 1280H X 800V  
#411430-1

### HELIX 10 CHIRP GPS **G4N**

**HD** 10.1" DISPLAY / 1024H X 600V  
#411400-1

### HELIX 9 CHIRP GPS **G4N**

**HD** 9" DISPLAY / 1024H X 600V  
#411360-1

### HELIX 8 CHIRP GPS **G4N**

**HD** 8" DISPLAY / 1024H X 600V  
#411330-1

### HELIX 7 CHIRP GPS **G4N**

**HD** 7" DISPLAY / 1024H X 600V  
#411630



Humminbird LakeMaster | Humminbird LakeMaster Premium  
Humminbird CoastMaster | Humminbird CoastMaster Premium  
Humminbird AutoChart Zero Line | Navionics | Navionics+  
Navionics HotMaps Platinum | Navionics Platinum+



### ONE-BOAT NETWORK APP COMPATIBLE

Update software, access technical support and unlock even more control. See more details on page 4.

### CHO MODELS (CONTROL HEAD ONLY)

Want to add a new unit to an existing Humminbird network, or select your own transducer? A CHO model gives you the freedom to choose. View our accessory transducer options, including a built-in MEGA Imaging trolling motor from Minn Kota. Find the right one for you on pages 40-41.



# HELIX SERIES

**G4** + **G3** NON-NETWORKING

Sometimes, fishing is a sport best enjoyed solo. These standalone HELIX Series fish finders offer an impressive array of features, from MEGA Imaging to Dual Spectrum CHIRP sonar, to Humminbird LakeMaster compatibility. No matter the size of your crew or your boat, there's something here for everyone.

## HELIX SERIES

SI • DI • CHIRP • GPS



### HELIX 7 MEGA SI GPS **G4**

**HD** 7" DISPLAY / 1024H X 600V  
#411620-1

### HELIX 7 CHIRP SI GPS **G4**

**HD** 7" DISPLAY / 1024H X 600V  
#411590-1



MEGA SIDE  
IMAGING®



MEGA DOWN  
IMAGING®



DUAL SPECTRUM  
CHIRP



SIDE  
IMAGING®



DOWN  
IMAGING®



DUALBEAM  
PLUS®



PRECISION  
GPS



HUMMINBIRD  
BASEMAP



AUTOCHART®  
LIVE

BUILT-IN TECHNOLOGIES VARY BY MODEL - SEE PAGES 34-35

[HUMMINBIRD.COM](http://HUMMINBIRD.COM)

Products shown with optional LakeMaster charts.  
Features and specs are subject to change without notice.



## HELIX SERIES

DI · CHIRP · GPS



### HELIX 7 MEGA DI GPS **G4**

**HD** 7" DISPLAY / 1024H X 600V  
#411610-1

### HELIX 5 CHIRP DI GPS **G3**

**HD** 5" DISPLAY / 800H X 480V  
#410230-1

## HELIX SERIES

CHIRP · GPS



### HELIX 5 CHIRP GPS **G3**

**HD** 5" DISPLAY / 800H X 480V  
#411660-1  
#411680-1 (PORTABLE)

## HELIX SERIES

DI / DUALBEAM



### HELIX 5 DI **G2**

**HD** 5" DISPLAY / 800H X 480V  
#410200-1

### HELIX 5 SONAR **G2**

**HD** 5" DISPLAY / 800H X 480V  
#410190-1



### TAKE IT WHERE THE FISH TAKE YOU

In addition to the HELIX 5 CHIRP GPS G3 Portable, Humminbird offers portable carrying case kits for HELIX 5 and HELIX 7 models. Portable model and kits include a soft-sided carrying case, suction cup transducer, 9Ah battery and charger.

**PTC U2** (shown)  
PORTABLE CARRYING CASE KIT  
#740157-1

**PTC UNB 2** (no battery)  
PORTABLE CARRYING CASE KIT  
#740157-1NB

#### ADD-ONS

Humminbird LakeMaster | Humminbird LakeMaster Premium | Humminbird CoastMaster | Humminbird CoastMaster Premium  
Humminbird AutoChart Zero Line | Navionics | Navionics+ | Navionics HotMaps Platinum | Navionics Platinum+

# APEX SERIES

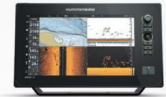
19 / 16 / 13



**APEX 19 MEGA SI+ CHARTPLOTTER**  
#411240-1



**APEX 16 MEGA SI+ CHARTPLOTTER**  
#411500-1



**APEX 13 MEGA SI+ CHARTPLOTTER**  
#411470-1

Additional Model Options	APEX 19 MEGA SI+ CHO (Control Head Only)   #411240-1CHO	APEX 16 MEGA SI+ CHO (Control Head Only)   #411500-1CHO	APEX 13 MEGA SI+ CHO (Control Head Only)   #411470-1CHO
Interface	Multi-Gesture Touchscreen + Keypad Control	Multi-Gesture Touchscreen + Keypad Control	Multi-Gesture Touchscreen + Keypad Control
Display Size & Pixel Matrix	18.5" Diagonal   1920H x 1080V	15.6" Diagonal   1920H x 1080V	13.3" Diagonal   1920H x 1080V
Bluetooth	Built-In	Built-In	Built-In
Wi-Fi	Built-In	Built-In	Built-In
Water Surface Temp	Built-In Transducer	Built-In Transducer	Built-In Transducer
Speed	GPS Speed Included	GPS Speed Included	GPS Speed Included
Waterproof Class	IPX7	IPX7	IPX7
Mounting Options	Gimbal, Front In-Dash or Optional Rear In-Dash	Gimbal, Front In-Dash or Optional Rear In-Dash	Gimbal, Front In-Dash or Optional Rear In-Dash
Transducer Included	XM 14 HW MSI T (Transom Mount)	XM 14 HW MSI T (Transom Mount)	XM 14 HW MSI T (Transom Mount)
Power Input	10.8-20 VDC	10.8-20 VDC	10.8-20 VDC
Power Draw	4.4 Amps	4.3 Amps	3.1 Amps

## SONAR CAPABILITIES

Sonar Types - Standard	MEGA Side Imaging+ MEGA Down Imaging+* Dual Spectrum CHIRP	MEGA Side Imaging+ MEGA Down Imaging+* Dual Spectrum CHIRP	MEGA Side Imaging+ MEGA Down Imaging+* Dual Spectrum CHIRP
Sonar - Coverage	20°, 42°, 60°, (2) 86° & (2) 55° @ -10dB (Total of 180°)	20°, 42°, 60°, (2) 86° & (2) 55° @ -10dB (Total of 180°)	20°, 42°, 60°, (2) 86° & (2) 55° @ -10dB (Total of 180°)
Sonar - Frequencies Supported	50/83/200/455/800 kHz & 1.2 MHz	50/83/200/455/800 kHz & 1.2 MHz	50/83/200/455/800 kHz & 1.2 MHz
2D CHIRP - Frequencies Supported	Full Mode (150-200 kHz) Narrow Mode (140-200 kHz) Wide Mode (180-240 kHz) Optional Deepwater (28-250 kHz)*	Full Mode (150-200 kHz) Narrow Mode (140-200 kHz) Wide Mode (180-240 kHz) Optional Deepwater (28-250 kHz)*	Full Mode (150-200 kHz) Narrow Mode (140-200 kHz) Wide Mode (180-240 kHz) Optional Deepwater (28-250 kHz)*
CHIRP Imaging - Frequencies Supported	455 kHz SI (405-505 kHz) 455 kHz DI (435-535 kHz) 800 kHz SI (780-840 kHz) 800 kHz DI (800-860 kHz) MEGA SI+ (1050-1175 kHz) MEGA DI+ (1100-1200 kHz)	455 kHz SI (405-505 kHz) 455 kHz DI (435-535 kHz) 800 kHz SI (780-840 kHz) 800 kHz DI (800-860 kHz) MEGA SI+ (1050-1175 kHz) MEGA DI+ (1100-1200 kHz)	455 kHz SI (405-505 kHz) 455 kHz DI (435-535 kHz) 800 kHz SI (780-840 kHz) 800 kHz DI (800-860 kHz) MEGA SI+ (1050-1175 kHz) MEGA DI+ (1100-1200 kHz)
Target Separation	2.5" (63.5 mm)	2.5" (63.5 mm)	2.5" (63.5 mm)
Power Output (Max)	Port 1 (2D CHIRP, MDI, MSI, 360) / 1000 Watts (RMS)* Port 2 (2D CHIRP) / 2000 Watts (RMS)*	Port 1 (2D CHIRP, MDI, MSI, 360) / 1000 Watts (RMS)* Port 2 (2D CHIRP) / 2000 Watts (RMS)*	Port 1 (2D CHIRP, MDI, MSI, 360) / 1000 Watts (RMS)* Port 2 (2D CHIRP) / 2000 Watts (RMS)*
Depth - Sonar	1200 ft (Standard Transducer) 3500 ft (Optional Transducer)	1200 ft (Standard Transducer) 3500 ft (Optional Transducer)	1200 ft (Standard Transducer) 3500 ft (Optional Transducer)
Range - Side Imaging (Side-To-Side)	800 ft (244 m) - 455 kHz 250 ft (76 m) - 800 kHz 500 ft (152 m) - MEGA+	800 ft (244 m) - 455 kHz 250 ft (76 m) - 800 kHz 500 ft (152 m) - MEGA+	800 ft (244 m) - 455 kHz 250 ft (76 m) - 800 kHz 500 ft (152 m) - MEGA+
Depth - Down Imaging	400 ft (122 m) - 455 kHz 125 ft (38 m) - 800 kHz 250 ft (76 m) - MEGA+	400 ft (122 m) - 455 kHz 125 ft (38 m) - 800 kHz 250 ft (76 m) - MEGA+	400 ft (122 m) - 455 kHz 125 ft (38 m) - 800 kHz 250 ft (76 m) - MEGA+

## MAPPING AND GPS FEATURES (For available CoastMaster charts see pages 34-35)

GPS Receiver	Internal	Internal	Internal
Waypoints, Routes, Tracks/Points	10,000, 50, 50/20,000	10,000, 50, 50/20,000	10,000, 50, 50/20,000
Humminbird Basemap Built-In	●	●	●
Humminbird AutoChart Live	●	●	●

## ACCESSORY OPTIONS

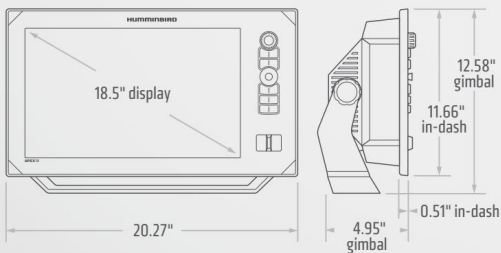
MEGA Live Imaging	○	○	○
MEGA 360 Imaging	○	○	○
CHIRP Radar	○	○	○
HDMI In/Out	○	○	○
Minn Kota Built-In MEGA Imaging	○	○	○
Minn Kota Trolling Motor Control	○	○	○
Minn Kota Talon/Raptor	○	○	○
Cannon Optimum Downrigger	○	○	○

## NETWORK OPTIONS

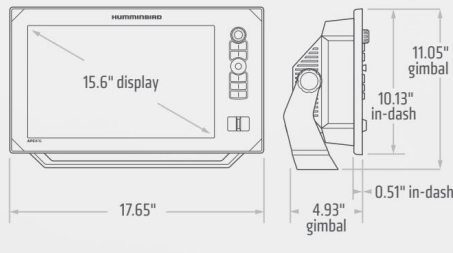
One-Boat Network Compatible	●	●	●
External GPS Receiver	○	○	○
AIS	○	○	○
VHF Radio	○	○	○
AutoPilot	○	○	○
5-Port Ethernet Switch	○	○	○
NMEA 2000	○	○	○

● Included ○ Optional — Not supported \*Optional deepwater transducer required Features and specifications subject to change without notice.

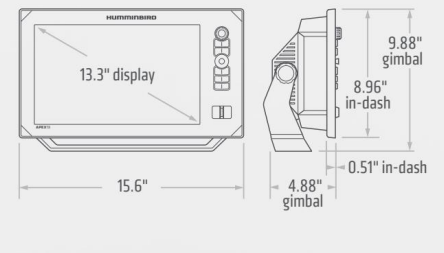
### APEX 19



### APEX 16



### APEX 13



# SOLIX SERIES

15 / 12 / 10



**SOLIX 15 MEGA SI+ GPS**  
G3 | #411570-1



**SOLIX 12 MEGA SI+ GPS**  
G3 | #411550-1



**SOLIX 10 MEGA SI+ GPS**  
G3 | #411530-1

<b>Additional Model Options</b>	SOLIX 15 MEGA SI+ GPS G3 CH0 (Control Head Only)   #411570-1CH0	SOLIX 12 MEGA SI+ GPS G3 CH0 (Control Head Only)   #411550-1CH0	SOLIX 10 MEGA SI+ GPS G3 CH0 (Control Head Only)   #411530-1CH0
<b>Interface</b>	Multi-Gesture Touchscreen + Keypad Control	Multi-Gesture Touchscreen + Keypad Control	Multi-Gesture Touchscreen + Keypad Control
<b>Display Size &amp; Pixel Matrix</b>	15.4" Diagonal   1280H x 800V	12.1" Diagonal   1280H x 800V	10.1" Diagonal   1280H x 800V
<b>Bluetooth</b>	Built-In	Built-In	Built-In
<b>Wi-Fi</b>	Built-In	Built-In	Built-In
<b>Water Surface Temp</b>	Built-In Transducer	Built-In Transducer	Built-In Transducer
<b>Speed</b>	GPS Speed Included	GPS Speed Included	GPS Speed Included
<b>Waterproof Class</b>	IPX7	IPX7	IPX7
<b>Mounting Options</b>	Gimbal or Optional Rear In-Dash	Gimbal or Optional Rear In-Dash	Gimbal or Optional Rear In-Dash
<b>Transducer Included</b>	XM 14 HW MSI T (Transom Mount)	XM 14 HW MSI T (Transom Mount)	XM 14 HW MSI T (Transom Mount)
<b>Power Input</b>	10.8-20 VDC	10.8-20 VDC	10.8-20 VDC
<b>Power Draw</b>	2.8 Amps	2.7 Amps	2.5 Amps

## SONAR CAPABILITIES

<b>Sonar Types - Standard</b>	MEGA Side Imaging+ MEGA Down Imaging+ Dual Spectrum CHIRP	MEGA Side Imaging+ MEGA Down Imaging+ Dual Spectrum CHIRP	MEGA Side Imaging+ MEGA Down Imaging+ Dual Spectrum CHIRP
<b>Sonar - Coverage</b>	20°, 42°, 60°, (2) 86° & (2) 55° @ -10dB (Total of 180°)	20°, 42°, 60°, (2) 86° & (2) 55° @ -10dB (Total of 180°)	20°, 42°, 60°, (2) 86° & (2) 55° @ -10dB (Total of 180°)
<b>Sonar - Frequencies Supported</b>	50/83/200/455/800 kHz & 1.2 MHz	50/83/200/455/800 kHz & 1.2 MHz	50/83/200/455/800 kHz & 1.2 MHz
<b>2D CHIRP - Frequencies Supported</b>	Full Mode (150-200 kHz) Narrow Mode (140-200 kHz) Wide Mode (180-240 kHz) Optional Deepwater (28-250 kHz)*	Full Mode (150-200 kHz) Narrow Mode (140-200 kHz) Wide Mode (180-240 kHz) Optional Deepwater (28-250 kHz)*	Full Mode (150-200 kHz) Narrow Mode (140-200 kHz) Wide Mode (180-240 kHz) Optional Deepwater (28-250 kHz)*
<b>CHIRP Imaging - Frequencies Supported</b>	455 kHz SI (405-505 kHz) 455 kHz DI (435-535 kHz) 800 kHz SI (780-840 kHz) 800 kHz DI (800-860 kHz) MEGA SI+ (1050-1175 kHz) MEGA DI+ (1100-1200 kHz)	455 kHz SI (405-505 kHz) 455 kHz DI (435-535 kHz) 800 kHz SI (780-840 kHz) 800 kHz DI (800-860 kHz) MEGA SI+ (1050-1175 kHz) MEGA DI+ (1100-1200 kHz)	455 kHz SI (405-505 kHz) 455 kHz DI (435-535 kHz) 800 kHz SI (780-840 kHz) 800 kHz DI (800-860 kHz) MEGA SI+ (1050-1175 kHz) MEGA DI+ (1100-1200 kHz)
<b>Target Separation</b>	2.5" (63.5 mm)	2.5" (63.5 mm)	2.5" (63.5 mm)
<b>Power Output (Max)</b>	1000 Watts (RMS)*; 8000 Watts (Peak-to-Peak)*	1000 Watts (RMS)*; 8000 Watts (Peak-to-Peak)*	1000 Watts (RMS)*; 8000 Watts (Peak-to-Peak)*
<b>Depth - Sonar</b>	1200 ft (Standard Transducer) 3500 ft (Optional Transducer)	1200 ft (Standard Transducer) 3500 ft (Optional Transducer)	1200 ft (Standard Transducer) 3500 ft (Optional Transducer)
<b>Range - Side Imaging (Side-To-Side)</b>	800 ft (244 m) - 455 kHz 250 ft (76 m) - 800 kHz 500 ft (152 m) - MEGA+	800 ft (244 m) - 455 kHz 250 ft (76 m) - 800 kHz 500 ft (152 m) - MEGA+	800 ft (244 m) - 455 kHz 250 ft (76 m) - 800 kHz 500 ft (152 m) - MEGA+
<b>Depth - Down Imaging</b>	400 ft (122 m) - 455 kHz 125 ft (38 m) - 800 kHz 250 ft (76 m) - MEGA+	400 ft (122 m) - 455 kHz 125 ft (38 m) - 800 kHz 250 ft (76 m) - MEGA+	400 ft (122 m) - 455 kHz 125 ft (38 m) - 800 kHz 250 ft (76 m) - MEGA+

## MAPPING AND GPS FEATURES (For available CoastMaster charts see pages 34-35)

<b>GPS Receiver</b>	Internal	Internal	Internal
<b>Waypoints, Routes, Tracks/Points</b>	10,000, 50, 50/20,000	10,000, 50, 50/20,000	10,000, 50, 50/20,000
<b>Humminbird Basemap Built-In</b>	●	●	●
<b>Humminbird AutoChart Live</b>	●	●	●

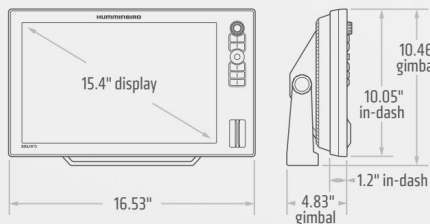
## ACCESSORY OPTIONS

<b>MEGA Live Imaging</b>	○	○	○
<b>MEGA 360 Imaging</b>	○	○	○
<b>CHIRP Radar</b>	○	○	○
<b>HDMI In/Out</b>	-	-	-
<b>Minn Kota Built-In MEGA Imaging</b>	○	○	○
<b>Minn Kota Trolling Motor Control</b>	○	○	○
<b>Minn Kota Talon/Raptor</b>	○	○	○
<b>Cannon Optimum Downrigger</b>	○	○	○

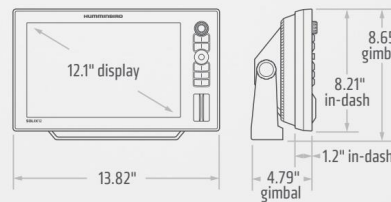
## NETWORK OPTIONS

<b>One-Boat Network Compatible</b>	●	●	●
<b>External GPS Receiver</b>	○	○	○
<b>AIS</b>	○	○	○
<b>VHF Radio</b>	○	○	○
<b>AutoPilot</b>	○	○	○
<b>5-Port Ethernet Switch</b>	○	○	○
<b>NMEA 2000 Direct Connections</b>	○	○	○

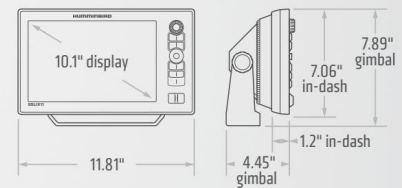
### SOLIX 15 | G3



### SOLIX 12 | G3



### SOLIX 10 | G3



# HELIX SERIES

15 / 12



**HELIX 15 MEGA S1+ GPS**  
G4N NETWORKING | #411320-1



**HELIX 15 MEGA DI+ GPS CHO**  
G4N NETWORKING | #411310-1 (CONTROL HEAD ONLY)



**HELIX 12 MEGA S1+ GPS**  
G4N NETWORKING | #411450-1

<b>Additional Model Options</b>	HELIX 15 MEGA S1+ GPS G4N CHO (Control Head Only)   #411320-1CHO	—
<b>Interface</b>	Keypad Control (X-Press Menu™ System)	Keypad Control (X-Press Menu System)
<b>Display Size &amp; Pixel Matrix</b>	15.4" Diagonal   1280H x 800V	15.4" Diagonal   1280H x 800V
<b>Bluetooth</b>	Built-In	Built-In
<b>Wi-Fi</b>	Built-In	Built-In
<b>Water Surface Temp</b>	Built-In Transducer	Built-In Transducer
<b>Speed</b>	GPS Speed Included	GPS Speed Included
<b>Waterproof Class</b>	IPX7	IPX7
<b>Mounting Options</b>	Gimbal or Optional Rear In-Dash	Gimbal or Optional Rear In-Dash
<b>Transducer Included</b>	XM 9 HW MSI T (Transom Mount)	Control Head Only – Transducer Not Included
<b>Power Input</b>	10.8-20 VDC	10.8-20 VDC
<b>Power Draw</b>	4.1 Amps	4.1 Amps

<b>Additional Model Options</b>	HELIX 12 MEGA S1+ GPS G4N CHO (Control Head Only)   #411450-1CHO
<b>Interface</b>	Keypad Control (X-Press Menu System)
<b>Display Size &amp; Pixel Matrix</b>	12.1" Diagonal   1280H x 800V
<b>Bluetooth</b>	Built-In
<b>Wi-Fi</b>	Built-In
<b>Water Surface Temp</b>	Built-In Transducer
<b>Speed</b>	GPS Speed Included
<b>Waterproof Class</b>	IPX7
<b>Mounting Options</b>	Gimbal or Optional Rear In-Dash
<b>Transducer Included</b>	XM 9 HW MSI T (Transom Mount)
<b>Power Input</b>	10.8-20 VDC
<b>Power Draw</b>	3.2 Amps

## SONAR CAPABILITIES

<b>Sonar Types - Standard</b>	MEGA Side Imaging+ MEGA Down Imaging+ Dual Spectrum CHIRP	MEGA Down Imaging+ Dual Spectrum CHIRP
<b>Sonar - Coverage</b>	20°, 42°, 60°, (2) 86° & (2) 55° @ -10dB (Total of 180°)	25°, 42°, 45°, 75° @ -10dB
<b>Sonar - Frequencies Supported</b>	50/83/200/455/800 kHz & 1.2 MHz	50/83/200/455/800 kHz & 1.2 MHz
<b>2D CHIRP - Frequencies Supported</b>	Full Mode (150-200 kHz) Narrow Mode (140-200 kHz) Wide Mode (180-240 kHz)	Full Mode (150-200 kHz) Narrow Mode (140-200 kHz) Wide Mode (180-240 kHz)
<b>CHIRP Imaging - Frequencies Supported</b>	455 kHz SI (405-505 kHz) 455 kHz DI (435-535 kHz) 800 kHz SI (780-840 kHz) 800 kHz DI (800-860 kHz) MEGA S1+ (1050-1175 kHz) MEGA DI+ (1100-1200 kHz)	455 kHz DI (435-535 kHz) 800 kHz DI (800-860 kHz) MEGA DI+ (1100-1200 kHz)
<b>Target Separation</b>	2.5" (63.5 mm)	2.5" (63.5 mm)
<b>Power Output (Max)</b>	1000 Watts (RMS)*; 8000 Watts (Peak-to-Peak)*	1000 Watts (RMS)*; 8000 Watts (Peak-to-Peak)*
<b>Depth - Sonar</b>	1200 ft (Standard Transducer) 3500 ft (Optional Transducer)	1200 ft (Standard Transducer) 3500 ft (Optional Transducer)
<b>Range - Side Imaging (Side-To-Side)</b>	800 ft (244 m) – 455 kHz 250 ft (76 m) – 800 kHz 400 ft (122 m) – MEGA+	—
<b>Depth - Down Imaging</b>	400 ft (122 m) – 455 kHz 125 ft (38 m) – 800 kHz 200 ft (61 m) – MEGA+	400 ft (122 m) – 455 kHz 125 ft (38 m) – 800 kHz 200 ft (61 m) – MEGA+

<b>Sonar Types - Standard</b>	MEGA Side Imaging+ MEGA Down Imaging+ Dual Spectrum CHIRP
<b>Sonar - Coverage</b>	20°, 42°, 60°, (2) 86° & (2) 55° @ -10dB (Total of 180°)
<b>Sonar - Frequencies Supported</b>	50/83/200/455/800 kHz & 1.2 MHz
<b>2D CHIRP - Frequencies Supported</b>	Full Mode (150-200 kHz) Narrow Mode (140-200 kHz) Wide Mode (180-240 kHz)
<b>CHIRP Imaging - Frequencies Supported</b>	455 kHz SI (405-505 kHz) 455 kHz DI (435-535 kHz) 800 kHz SI (780-840 kHz) 800 kHz DI (800-860 kHz) MEGA S1+ (1050-1175 kHz) MEGA DI+ (1100-1200 kHz)
<b>Target Separation</b>	2.5" (63.5 mm)
<b>Power Output (Max)</b>	1000 Watts (RMS)*; 8000 Watts (Peak-to-Peak)*
<b>Depth - Sonar</b>	1200 ft (Standard Transducer) 3500 ft (Optional Transducer)
<b>Range - Side Imaging (Side-To-Side)</b>	800 ft (244 m) – 455 kHz 250 ft (76 m) – 800 kHz 400 ft (122 m) – MEGA+
<b>Depth - Down Imaging</b>	400 ft (122 m) – 455 kHz 125 ft (38 m) – 800 kHz 200 ft (61 m) – MEGA+

## MAPPING AND GPS FEATURES (For available Humminbird map cards see pages 44-45)

<b>GPS Receiver</b>	Internal	Internal
<b>Waypoints, Routes, Tracks/Points</b>	2,500, 47, 50/20,000	2,500, 47, 50/20,000
<b>Humminbird Basemap Built-In</b>	●	●
<b>Humminbird AutoChart Live (In Open Water Mode)</b>	●	●
<b>Humminbird AutoChart Live Ice (In Ice Fishing Mode)</b>	—	—

<b>GPS Receiver</b>	Internal
<b>Waypoints, Routes, Tracks/Points</b>	2,500, 47, 50/20,000
<b>Humminbird Basemap Built-In</b>	●
<b>Humminbird AutoChart Live (In Open Water Mode)</b>	●
<b>Humminbird AutoChart Live Ice (In Ice Fishing Mode)</b>	—

## ACCESSORY OPTIONS

<b>MEGA Live Imaging</b>	○	○
<b>MEGA 360 Imaging</b>	○	○
<b>CHIRP Radar</b>	○	○
<b>HDMI In/Out</b>	—	—
<b>Minn Kota Built-In MEGA Imaging</b>	○	○
<b>Minn Kota Trolling Motor Control</b>	○	○
<b>Minn Kota Talon/Raptor</b>	○	○
<b>Cannon Optimum Downrigger</b>	○	○

<b>MEGA Live Imaging</b>	○
<b>MEGA 360 Imaging</b>	○
<b>CHIRP Radar</b>	○
<b>HDMI In/Out</b>	—
<b>Minn Kota Built-In MEGA Imaging</b>	○
<b>Minn Kota Trolling Motor Control</b>	○
<b>Minn Kota Talon/Raptor</b>	○
<b>Cannon Optimum Downrigger</b>	○

## NETWORK OPTIONS

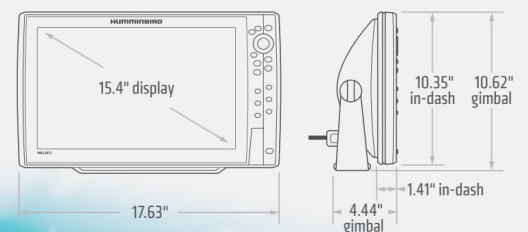
<b>One-Boat Network Compatible</b>	●	●
<b>External GPS Receiver</b>	○	○
<b>AIS</b>	○	○
<b>VHF Radio</b>	○	○
<b>AutoPilot</b>	○	○
<b>5-Port Ethernet Switch</b>	○	○
<b>NMEA 2000</b>	○	○

<b>One-Boat Network Compatible</b>	●
<b>External GPS Receiver</b>	○
<b>AIS</b>	○
<b>VHF Radio</b>	○
<b>AutoPilot</b>	○
<b>5-Port Ethernet Switch</b>	○
<b>NMEA 2000</b>	○

● Included ○ Optional — Not supported \*Optional deepwater transducer required Features and specifications subject to change without notice.



HELIX 15 | G4N



HUMMINBIRD.COM



# HELIX SERIES

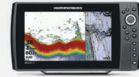
10 / 9 / 8



**HELIX 10 MEGA SI+GPS**  
G4N NETWORKING | #411420-1



**HELIX 10 MEGA DI+GPS**  
G4N NETWORKING | #411410-1



**HELIX 10 CHIRP-GPS**  
G4N NETWORKING | #411400-1



**HELIX 9 MEGA SI+GPS**  
G4N NETWORKING | #411380-1

Additional Model Options	HELIX 10 MEGA SI+GPS G4N CHO (Control Head Only)   #411420-1CHO	HELIX 10 MEGA DI+GPS G4N CHO (Control Head Only)   #411410-1CHO	—	HELIX 9 MEGA SI+GPS G4N CHO (Control Head Only)   #411380-1CHO
Interface	Keypad Control (X-Press Menu System)	Keypad Control (X-Press Menu System)	Keypad Control (X-Press Menu System)	Keypad Control (X-Press Menu System)
Display Size & Pixel Matrix	10.1" Diagonal   1024H x 600V	10.1" Diagonal   1024H x 600V	10.1" Diagonal   1024H x 600V	9" Diagonal   1024H x 600V
Bluetooth	Built-In	Built-In	Built-In	Built-In
Wi-Fi	Built-In	Built-In	Built-In	Built-In
Water Surface Temp	Built-In Transducer	Built-In Transducer	Built-In Transducer	Built-In Transducer
Speed	GPS Speed Included	GPS Speed Included	GPS Speed Included	GPS Speed Included
Waterproof Class	IPX7	IPX7	IPX7	IPX7
Mounting Options	Gimbal or Optional Rear In-Dash	Gimbal or Optional Rear In-Dash	Gimbal or Optional Rear In-Dash	Gimbal or Optional Rear In-Dash
Transducer Included	XM 9 HW MSI T (Transom Mount)	XM 9 HW MDI T	XNT 9 HW T (Transom Mount)	XM 9 HW MSI T (Transom Mount)
Power Input	10.8-20 VDC	10.8-20 VDC	10.8-20 VDC	10.8-20 VDC
Power Draw	2.7 Amps	2.7 Amps	2.7 Amps	2.4 Amps

## SONAR CAPABILITIES

Sonar Types - Standard	MEGA Side Imaging+ MEGA Down Imaging+ Dual Spectrum CHIRP	MEGA Down Imaging+ Dual Spectrum CHIRP	Dual Spectrum CHIRP	MEGA Side Imaging+ MEGA Down Imaging+ Dual Spectrum CHIRP
Sonar - Coverage	20°, 42°, 60°, (2) 86° 6 (2) 55° @ -10dB (Total of 180°)	25°, 42°, 45°, 75° @ -10dB	20°, 42° 6 60° @ -10dB	20°, 42°, 60°, (2) 86° 6 (2) 55° @ -10dB (Total of 180°)
Sonar - Frequencies Supported	50/83/200/455/800 kHz 6 1.2 MHz	50/83/200/455/800 kHz 6 1.2 MHz	50/80/200 kHz	50/83/200/455/800 kHz 6 1.2 MHz
2D CHIRP - Frequencies Supported	Full Mode (150-200 kHz) Narrow Mode (140-200 kHz) Wide Mode (180-240 kHz)	Full Mode (150-200 kHz) Narrow Mode (140-200 kHz) Wide Mode (180-240 kHz)	Full Mode (150-200 kHz) Narrow Mode (140-200 kHz) Wide Mode (180-240 kHz)	Full Mode (150-200 kHz) Narrow Mode (140-200 kHz) Wide Mode (180-240 kHz)
CHIRP Imaging - Frequencies Supported	455 kHz SI (405-505 kHz) 455 kHz DI (435-535 kHz) 800 kHz SI (780-840 kHz) 800 kHz DI (800-860 kHz) MEGA SI+ (1050-1175 kHz) MEGA DI+ (1100-1200 kHz)	455 kHz DI (435-535 kHz) 800 kHz DI (800-860 kHz) MEGA DI+ (1100-1200 kHz)	—	455 kHz SI (405-505 kHz) 455 kHz DI (435-535 kHz) 800 kHz SI (780-840 kHz) 800 kHz DI (800-860 kHz) MEGA SI+ (1050-1175 kHz) MEGA DI+ (1100-1200 kHz)
Target Separation	2.5" (63.5 mm)	2.5" (63.5 mm)	2.5" (63.5 mm)	2.5" (63.5 mm)
Power Output (Max)	1000 Watts (RMS)*; 8000 Watts (Peak-to-Peak)*	1000 Watts (RMS)*; 8000 Watts (Peak-to-Peak)*	1000 Watts (RMS)*; 8000 Watts (Peak-to-Peak)*	1000 Watts (RMS)*; 8000 Watts (Peak-to-Peak)*
Depth - Sonar	1200 ft (Standard Transducer) 3500 ft (Optional Transducer)	1200 ft (Standard Transducer) 3500 ft (Optional Transducer)	1200 ft (Standard Transducer) 3500 ft (Optional Transducer)	1200 ft (Standard Transducer) 3500 ft (Optional Transducer)
Range - Side Imaging (Side-To-Side)	800 ft (244 m) - 455 kHz 250 ft (76 m) - 800 kHz 400 ft (122 m) - MEGA+	—	—	800 ft (244 m) - 455 kHz 250 ft (76 m) - 800 kHz 400 ft (122 m) - MEGA+
Depth - Down Imaging	400 ft (122 m) - 455 kHz 125 ft (38 m) - 800 kHz 200 ft (61 m) - MEGA+	400 ft (122 m) - 455 kHz 125 ft (38 m) - 800 kHz 200 ft (61 m) - MEGA+	—	400 ft (122 m) - 455 kHz 125 ft (38 m) - 800 kHz 200 ft (61 m) - MEGA+

## MAPPING AND GPS FEATURES (For available Humminbird map cards see pages 44-45)

GPS Receiver	Internal	Internal	Internal	Internal
Waypoints, Routes, Tracks/Points	2,500, 47, 50/20,000	2,500, 47, 50/20,000	2,500, 47, 50/20,000	2,500, 47, 50/20,000
Humminbird Basemap Built-In	●	●	●	●
Humminbird AutoChart Live (In Open Water Mode)	●	●	●	●
Humminbird AutoChart Live Ice (In Ice Fishing Mode)	●	●	●	●

## ACCESSORY OPTIONS

MEGA Live Imaging	○	○	○	○
MEGA 360 Imaging	○	○	○	○
CHIRP Radar	○	○	○	○
HDMI In/Out	—	—	—	—
Minn Kota Built-In MEGA Imaging	○	○	○	○
Minn Kota Trolling Motor Control	○	○	○	○
Minn Kota Talon/Raptor	○	○	○	○
Cannon Optimum Downrigger	○	○	○	○

## NETWORK OPTIONS

One-Boat Network Compatible	●	●	●	●
External GPS Receiver	○	○	○	○
AIS	○	○	○	○
VHF Radio	○	○	○	○
AutoPilot	○	○	○	○
5-Port Ethernet Switch	○	○	○	○
NMEA 2000	○	○	○	○

● Included ○ Optional — Not supported \*Optional deepwater transducer required Features and specifications subject to change without notice.







# HELIX SERIES

7 / 5



Additional Model Options	–	HELIX 7 MEGA DI-GPS G4N CHO (Control Head Only)   #411640-1	–	–	–	–
Interface	Keypad Control (X-Press Menu System)	Keypad Control (X-Press Menu System)	Keypad Control (X-Press Menu System)	Keypad Control (X-Press Menu System)	Keypad Control (X-Press Menu System)	Keypad Control (X-Press Menu System)
Display Size & Pixel Matrix	7" Diagonal   10240H x 600V	7" Diagonal   10240H x 600V	7" Diagonal   10240H x 600V	7" Diagonal   10240H x 600V	7" Diagonal   10240H x 600V	7" Diagonal   10240H x 600V
Bluetooth	Built-In	Built-In	Built-In	Built-In	Built-In	Built-In
Wi-Fi	–	–	–	–	–	–
Water Surface Temp	Built-In Transducer	Built-In Transducer	Built-In Transducer	Built-In Transducer	Built-In Transducer	Built-In Transducer
Speed	GPS Speed Included	GPS Speed Included	GPS Speed Included	GPS Speed Included	GPS Speed Included	GPS Speed Included
Waterproof Class	IPX7	IPX7	IPX7	IPX7	IPX7	IPX7
Mounting Options	Gimbal or Optional Rear In-Dash	Gimbal or Optional Rear In-Dash	Gimbal or Optional Rear In-Dash	Gimbal or Optional Rear In-Dash	Gimbal or Optional Rear In-Dash	Gimbal or Optional Rear In-Dash
Transducer Included	XNT 9 HW MSI 150 T (Transom Mount)	XNT 9 HW MDI 75 T (Transom Mount)	XNT 9 HW T (Transom Mount)	XNT 9 HW MSI 150 T (Transom Mount)	XNT 9 HW SI (Transom Mount)	XNT 9 HW MDI 75 T (Transom Mount)
Power Input	10.8-20 VDC	10.8-20 VDC	10.8-20 VDC	10.8-20 VDC	10.8-20 VDC	10.8-20 VDC
Power Draw	800 mA	800 mA	800 mA	800 mA	800 mA	800 mA

## SONAR CAPABILITIES

Sonar Types - Standard	MEGA Side Imaging MEGA Down Imaging Dual Spectrum CHIRP	MEGA Down Imaging Dual Spectrum CHIRP	Dual Spectrum CHIRP	MEGA Side Imaging MEGA Down Imaging Dual Spectrum CHIRP	Side Imaging Down Imaging Dual Spectrum CHIRP	MEGA Down Imaging Dual Spectrum CHIRP
Sonar - Coverage	20°, 42°, 60° & (2) 86° @ -10dB (Total of 180°)	16°, 42°, 28°, 45° & 75° @ -10dB	20°, 42° & 60° @ -10dB	20°, 42°, 60° & (2) 86° @ -10dB (Total of 180°)	16°, 28°, 42°, 45° & 75° @ -10dB	16°, 42°, 28°, 45° & 75° @ -10dB
Sonar - Frequencies Supported	50/83/200/455 kHz	50/83/200/455 kHz	50/83/200 kHz	50/83/200/455 kHz	50/83/200/455 kHz	50/83/200/455 kHz
2D CHIRP - Frequencies Supported	Full Mode (150-220 kHz) Narrow Mode (180-240 kHz) Wide Mode (140-200 kHz)	Full Mode (150-220 kHz) Narrow Mode (180-240 kHz) Wide Mode (140-200 kHz)	Full Mode (150-220 kHz) Narrow Mode (180-240 kHz) Wide Mode (140-200 kHz)	Full Mode (150-220 kHz) Narrow Mode (180-240 kHz) Wide Mode (140-200 kHz)	Full Mode (150-220 kHz) Narrow Mode (180-240 kHz) Wide Mode (140-200 kHz)	Full Mode (150-220 kHz) Narrow Mode (180-240 kHz) Wide Mode (140-200 kHz)
CHIRP Imaging - Frequencies Supported	455 kHz (440-500 kHz) MEGA SI (1075-1150 kHz) MEGA DI (1075-1150 kHz)	455 kHz (440-500 kHz) MEGA DI (1075-1150 kHz)	–	455 kHz (440-500 kHz) MEGA SI (1075-1150 kHz) MEGA DI (1075-1150 kHz)	455 kHz (420-520 kHz)	455 kHz (440-500 kHz) MEGA DI (1075-1150 kHz)
Target Separation	2.5" (63.5 mm)	2.5" (63.5 mm)	2.5" (63.5 mm)	2.5" (63.5 mm)	2.5" (63.5 mm)	2.5" (63.5 mm)
Power Output (Max)	500 Watts (RMS); 4000 Watts (Peak-to-Peak)	500 Watts (RMS); 4000 Watts (Peak-to-Peak)	500 Watts (RMS); 4000 Watts (Peak-to-Peak)	500 Watts (RMS); 4000 Watts (Peak-to-Peak)	500 Watts (RMS); 4000 Watts (Peak-to-Peak)	500 Watts (RMS); 4000 Watts (Peak-to-Peak)
Depth - Sonar	1200 ft (Standard Transducer) 3500 ft (Optional Transducer)	1200 ft (Standard Transducer) 3500 ft (Optional Transducer)	1200 ft (Standard Transducer) 3500 ft (Optional Transducer)	1200 ft (Standard Transducer) 3500 ft (Optional Transducer)	1200 ft (Standard Transducer) 3500 ft (Optional Transducer)	1200 ft (Standard Transducer) 3500 ft (Optional Transducer)
Range - Side Imaging (Side-To-Side)	480 ft (146 m) – 455 kHz 150 ft (46 m) – MEGA	–	–	480 ft (146 m) – 455 kHz 150 ft (46 m) – MEGA	480 ft (146 m) – 455 kHz	–
Depth - Down Imaging	480 ft (146 m) – 455 kHz 75 ft (23 m) – MEGA	350 ft (107 m) – 455 kHz 125 ft (38 m) – MEGA	–	480 ft (146 m) – 455 kHz 75 ft (23 m) – MEGA	400 ft (122 m) – 455 kHz	350 ft (107 m) – 455 kHz 125 ft (38 m) – MEGA

## MAPPING AND GPS FEATURES (For available Humminbird map cards see pages 44-45)

GPS Receiver	Internal	Internal	Internal	Internal	Internal	Internal
Waypoints, Routes, Tracks/Points	2,750, 45, 50/20,000	2,750, 45, 50/20,000	2,750, 45, 50/20,000	2,750, 45, 50/20,000	2,750, 45, 50/20,000	2,750, 45, 50/20,000
Humminbird Basemap Built-In	●	●	●	●	●	●
Humminbird AutoChart Live (In Open Water Mode)	●	●	●	●	●	●
Humminbird AutoChart Live Ice (In Ice Fishing Mode)	●	●	●	●	●	●

## ACCESSORY OPTIONS

MEGA Live Imaging	–	–	–	–	–	–
MEGA 360 Imaging	–	–	–	–	–	–
CHIRP Radar	○	○	○	○	○	○
HDMI In/Out	–	–	–	–	–	–
Minn Kota Built-In MEGA Imaging	○	○	○	○	○	○
Minn Kota Trolling Motor Control	○	○	○	○	○	○
Minn Kota Talon/Raptor	○	○	○	○	○	○
Cannon Optimum Downrigger	–	–	–	–	–	–

## NETWORK OPTIONS

One-Boat Network Compatible	●	●	●	–	–	–
External GPS Receiver	○	○	○	–	–	–
AIS	○	○	○	○	○	○
VHF Radio	○	○	○	–	–	–
AutoPilot	○	○	○	○	○	○
5-Port Ethernet Switch	○	○	○	–	–	–
NMEA 2000	○	○	○	–	–	–

● Included ○ Optional – Not supported Features and specifications subject to change without notice.



### HELIX 7 | G4N







# BUILT-IN CHARTS

HUMMINBIRD

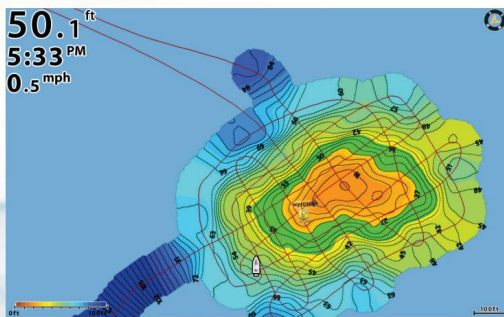
# CHARTS

## READY TO FISH, RIGHT OUT OF THE BOX.

Only Humminbird delivers the detail, accuracy and innovative, one-of-a-kind features to eliminate unproductive water and find the best fishing spots faster. These powerful built-in maps will make the most of any day on the water. Search less. Fish more.

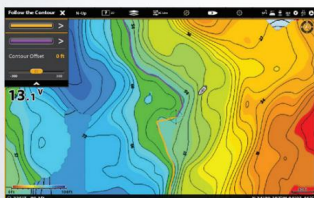
### HUMMINBIRD BASEMAP

We've enhanced our standard Basemap to deliver more detail and a superior angling experience. The Humminbird Basemap is built into all APEX, SOLIX and GPS-equipped HELIX Series models. Based on freshwater data from LakeMaster and CoastMaster data from the most-trusted saltwater sources, these accurate maps provide you with a clear view of underwater terrain. Identify buoys, daymarkers, hazards, marinas and countless other navigation aids and points of interest with our comprehensive icon system. You'll also see contours, depth markings and, for coastal areas, spot soundings. On the water, confidence is key. And the Humminbird Basemap delivers.



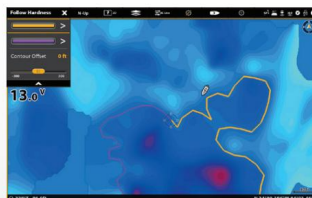
### AUTOCHART LIVE

Build richly detailed maps of artificial reefs, wrecks and other favorite fishing spots in real time with Humminbird AutoChart Live, available on all APEX, SOLIX and GPS-equipped HELIX Series models. Map the water as you drive the boat, with eight hours of built-in recording time. Once your map has been created, view it with vegetation, bottom hardness and depth contours to locate the best fish-holding areas. Also, use it with i-Pilot Link Follow and other patented Humminbird LakeMaster features. The future of digital charting has arrived. Better get on board.



DEPTH CONTOURS

+



BOTTOM HARDNESS

+



VEGETATION

## OPTIONAL HIGH-DEFINITION CHARTS

HUMMINBIRD

# COASTMASTER

## THE COAST IS NOW ABSOLUTELY CLEAR.



Find the path to your next big catch with the incredible accuracy and detail of Humminbird CoastMaster. With VX Technology, easy-to-read contours and chart customization, you'll be able to identify the spots you know will hold fish and navigate there safely.



### COMPATIBLE MODELS

- » APEX (all models)
- » SOLIX (all models)
- » HELIX (G3/G3N and newer)

SCAN FOR  
COVERAGE  
AREAS

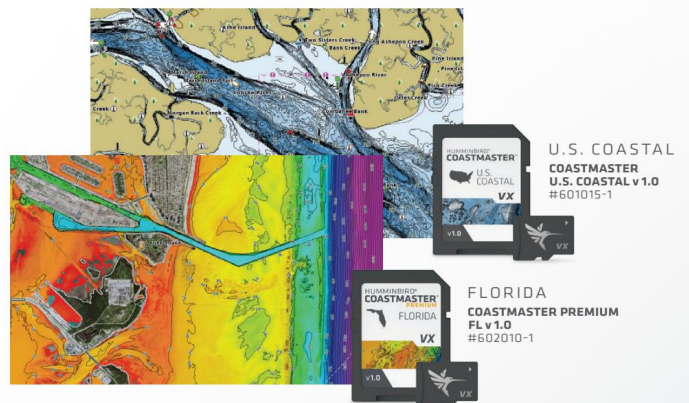


### COASTMASTER

Building on the latest data available, CoastMaster delivers unrivaled nearshore and offshore angling performance. You'll also have access to more fish-catching features thanks to compatibility with the One-Boat Network from Humminbird and Minn Kota.

### COASTMASTER PREMIUM

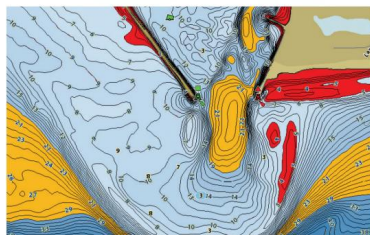
Upgrade your navigational view with all the detail and features of CoastMaster, plus shaded relief, enhanced aerial imagery, bottom hardness and auxiliary contours. Now available for Florida.





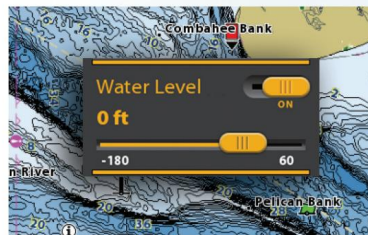
### VX TECHNOLOGY

Don't delay. Vector-accelerated technology provides five customizable color palettes and fast map load times, so you can seize every moment on the water.



### HIGHLIGHT DEPTH

Select and highlight a particular depth range, so you can easily target productive water and stay in the bite zone.



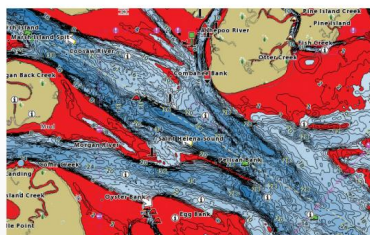
### WATER LEVEL OFFSET

Synchronize the depth contours and shorelines of your CoastMaster charts with the actual water levels, so your chart will reflect the current water level of your fishing spots.



### DRYING AREAS

Quickly find areas that will dry out during low tide, highlighted in green on your CoastMaster chart, in order to better understand fish movement and identify your navigation route.



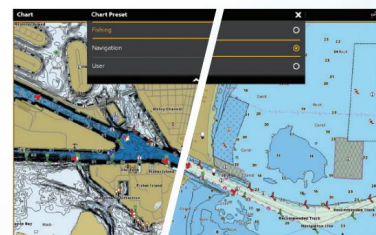
### SHALLOW WATER HIGHLIGHT

Navigate safely and quickly identify spots where fish are hiding with red shading highlights for shallow water areas on an adjustable range from zero to 30 feet. Create up to four user-defined depth highlight ranges, so you can easily target productive water.



### TIDES & CURRENTS

Whichever way the tide rolls, make sure it's in your favor. CoastMaster's predictive software allows you to plan your fishing day with tidal direction and height, as well as the speed and direction of currents and more, so you'll never be caught guessing.



### CHART VIEWS

See the water your way with three view presets. Customize each desired preset and easily switch from Fishing, Navigation and User modes to show only the details you want and need on screen for your fishing preferences.

# TRANSDUCERS



## TRANSSOM

Mount on the transom (back of the boat).

Available on many models, the impact release feature pivots transducer out of the way if struck by an object.



## TROLLING MOTOR

Mount on most trolling motors.

Low-profile shape reduces drag and hang-ups on weeds.



## IN-HULL

Mount to inside of most single-layer fiberglass hulls using slow-cure epoxy.

(Cored fiberglass, metal or wood hulls not acceptable. Hull must be free of trapped air and voids.)



## PORTABLE

Mount on transom or side of most smooth-surface wood, aluminum or fiberglass boats.

Heavy-duty suction cup holds transducer at trolling speeds only.



## STAINLESS STEEL THRU-HULL

Get MEGA Imaging+ (both Side Imaging and Down Imaging) as well as Dual Spectrum CHIRP 2D sonar from this heavy-duty thru-hull option.



## BRONZE

Ideal for large boats and boats with in-board motors.

Not recommended for trailered boats. Professional installation recommended.



## PLASTIC

Economic alternative to bronze transducer. Mounts on thinner hulls such as aluminum.

Not recommended for trailered boats. Professional installation recommended.

1	XM 9 HW MSI T	XTM 9 HW MSI T	—	—	—	—	XPTH 9 HW MSI T
2	XM 9 HW MDI T	XTM 9 HW MDI T	—	—	—	—	XPTH 9 HW MSI T
3	XNT 9 HW MSI 150 T	XTM 9 HW MSI 150 T	—	—	—	—	—
4	XNT 9 HW MDI 75 T	XTM 9 HW MDI 75 T	—	—	—	—	—
5	XNT 9 HW DI T	—	—	—	—	—	—
6	XNT 9 HW SI T	—	—	—	—	—	—
7	XNT 9 HW T	XTM 9 HW T	XP 9 HW T XP 9 HW	XPT 9 HW T	—	—	XPTH 9 HW T
8	XM 9 20 MSI T	XTM 9 20 MSI T	—	—	—	—	XPTH 9 20 MSI T
9	XM 9 MDI T	XTM 9 MDI T	—	—	—	—	—
10	XNT 9 20 T XNT 9 20	XTM 9 20 T	XP 9 20 T XP 9 20 XAP 9 20	XPT 9 20 T	—	XTH 9 20	XTH 9 20 P
11	XNT 9 SI 180 T	XTM 9 SI 180 T	—	—	—	—	XPTH 9 HDSI 180 T
12	XHS 9 HDSI 180 T	XTM 9 HDSI 180 T	—	—	—	—	XPTH 9 HDSI 180 T
13	XNT 9 DI T	XTM 9 WIDE DI 20 T	—	—	—	—	XPTH 9 DI T
14	XNT 9 DI T	XTM 9 DI 25 T	—	—	—	—	XPTH 9 DI T
15	XM 14 HW MSI T	XTM 14 HW MSI T	—	—	SSTH 14 HS MSI+ T	—	XPTH 14 HW MSI T
16	XM 14 HW MDI T	XTM 14 HW MDI T	—	—	SSTH 14 HS MSI+ T	—	—
17	XNT 14 HW T	XTM 14 HW T	XP 14 HW T XP 14 HW	—	—	—	XPTH 14 HW T
18	XM 14 20 MDI T	XTM 14 20 MDI T	—	—	—	—	—
19	XNT 14 20 T XNT 14 74 T	XTM 14 20 T	XP 14 20 XP 14 20 T	—	—	XTH 14 20	XPTH 14 20 T XPTH 14 74 T
20	XNT 14 DI T	XTM 14 DI T	—	—	—	—	XPTH 14 20 MSI T
21	XM 14 20 MSI T	—	—	—	—	—	XPTH 14 20 MSI T XPTH 14 74 MSI T

## MODEL GROUP NUMBER

1	HELIX 15 MSI-GPS G4N HELIX 12 MSI-GPS G4N, HELIX 12 MSI-GPS G3N HELIX 10 MSI-GPS G4N, HELIX 10 MSI-GPS G3N HELIX 9 MSI-GPS G4N, HELIX 9 MSI-GPS G3N HELIX 8 MSI-GPS G4N, HELIX 8 MSI-GPS G3N	7	HELIX 12 CHIRP-GPS G4N, HELIX 12 CHIRP-GPS G3N HELIX 10 CHIRP-GPS G4N, HELIX 10 CHIRP-GPS G3N HELIX 9 CHIRP-GPS G4N, HELIX 9 CHIRP-GPS G3N HELIX 8 CHIRP-GPS G4N, HELIX 8 CHIRP-GPS G3N HELIX 7 CHIRP-GPS G4N, HELIX 7 CHIRP-GPS G3N, HELIX 7 CHIRP-GPS G3, HELIX 5 CHIRP-GPS G3	12	HELIX 12 CHIRP-SI-GPS HELIX 10 SI-GPS HELIX 9 SI-GPS	17	APEX 19 MSI   APEX 16 MSI   APEX 13 MSI SOLIX 15 MSI G3, SOLIX 15 MSI G2, SOLIX 15 MDI G2 SOLIX 12 MSI G3, SOLIX 12 MSI G2, SOLIX 12 MDI G2 SOLIX 10 MSI G3, SOLIX 10 MSI G2, SOLIX 10 MDI G2 NOTE: These transducers provide 2D only.
2	HELIX 15 MDI-GPS G4N HELIX 12 MDI-GPS G4N, HELIX 12 MDI-GPS G3N HELIX 10 MDI-GPS G4N, HELIX 10 MDI-GPS G3N HELIX 9 MDI-GPS G4N, HELIX 9 MDI-GPS G3N	8	HELIX 12 CHIRP-MEGA SI-GPS G2N HELIX 10 CHIRP-MEGA SI-GPS G2N HELIX 9 CHIRP-MEGA SI-GPS G2N	13	HELIX 12 CHIRP-DI-GPS G2N, HELIX 12 CHIRP-DI-GPS HELIX 10 CHIRP-DI-GPS G2N, HELIX 10 DI-GPS HELIX 9 CHIRP-DI-GPS G2N, HELIX 9 DI-GPS	18	SOLIX 15   SOLIX 12   SOLIX 10
3	HELIX 7 MSI-GPS G4N, HELIX 7 MSI-GPS G4, HELIX 7 MSI-GPS G3N, HELIX 7 MSI-GPS G3	9	HELIX 12 CHIRP-MEGA DI-GPS G2N HELIX 10 CHIRP-MEGA DI-GPS G2N HELIX 9 CHIRP-MEGA DI-GPS G2N	14	HELIX 7 CHIRP-DI G2, HELIX 7 CHIRP-DI-GPS G2, HELIX 7 CHIRP-DI-GPS G2N, HELIX 7 DI-GPS, HELIX 7 DI, HELIX 5 DI G2, HELIX 5 CHIRP-DI-GPS G2, HELIX 5 DI-GPS, HELIX 5 DI	19	SOLIX 15   SOLIX 12   SOLIX 10 NOTE: These transducers provide 2D only.
4	HELIX 8 MDI-GPS G4N, HELIX 8 MDI-GPS G3N HELIX 7 MDI-GPS G4N, HELIX 7 MDI-GPS G4, HELIX 7 MDI-GPS G3N, HELIX 7 MDI-GPS G3	10	HELIX 12 CHIRP-GPS G2N, HELIX 12 CHIRP-GPS HELIX 10 CHIRP-GPS G2N, HELIX 10 SONAR-GPS HELIX 9 CHIRP-GPS G2N, HELIX 9 SONAR-GPS HELIX 7 SONAR G2, HELIX 7 CHIRP-GPS G2, HELIX 7 CHIRP-GPS G2N, HELIX 7 SONAR, HELIX 7 SONAR-GPS HELIX 5 SONAR G2, HELIX 5 CHIRP-GPS G2, HELIX 5 SONAR, HELIX 5 SONAR-GPS	15	APEX 19 MSI   APEX 16 MSI   APEX 13 MSI SOLIX 15 MSI G3, SOLIX 15 MSI G2 SOLIX 12 MSI G3, SOLIX 12 MSI G2 SOLIX 10 MSI G3, SOLIX 10 MSI G2	20	SOLIX 15   SOLIX 12   SOLIX 10 ONIX® - Down Imaging
5	HELIX 5 CHIRP DI-GPS G3	11	HELIX 7 CHIRP-SI-GPS G2, HELIX 7 CHIRP-SI-GPS G2N, HELIX 7 SI-GPSHELIX 5 CHIRP-SI-GPS G2, HELIX 5 SI-GPS	16	SOLIX 15 MDI G2 SOLIX 12 MDI G2 SOLIX 10 MDI G2	21	SOLIX 15 MEGA SI SOLIX 12 MEGA SI SOLIX 10 MEGA SI NOTE: These transducers provide 2D only.



# TRANSDUCER MOUNTING



**TRANSMOUNT KIT**  
Mounting hardware for transom-mount transducers. Kits include all mounting brackets, hardware and cable clamps required for installation.



**TROLLING MOTOR MOUNT KIT**  
Mounting hardware kit adapts our standard transom-mount transducers for use on the trolling motor. Kits include all mounting brackets, hardware and wire ties required for installation.



**PORTABLE MOUNT KIT**  
For use with portable transducers. Includes all hardware and suction cup.



**ICE MOUNT KIT**  
Transducer mounting hardware and float for XI 9 19 and XI 9 20 ice transducers.



**KAYAK MOUNT KIT**  
Transducer mounting hardware for installation in a kayak. Kit includes surface-preparation products in addition to a transducer cradle and adhesive products.

# TRANSDUCER CABLES



**EXTENSION**  
10 FT AND 30 FT  
Add extra length to standard transducer cables. Available in two lengths, cable plugs into existing transducer and your fish finder.



**DUAL BEAM**  
Continuously splits Side Imaging signal and Dual Beam signal. For use with a second transducer without a switch.



**SPLITTER**  
LEFT/RIGHT  
Splits Side Imaging source signal into left and right output for two Side Imaging transducers.

MHX XM HW	AD MTM HW MSI	-	-	-
MHX XM HW	AD MTM HW MDI	-	-	-
MHX XNT or MHX MXNT	AD XTM 9	-	-	-
MHX XNT or MHX MXNT	AD XTM 9	-	-	-
MHX XNT or MHX MXNT	AD XTM 9	-	-	-
MHX XNT or MHX MXNT	AD XTM 9	-	-	-
MHX XNT or MHX MXNT	AD XTM 9	MHX XNPT	-	-
MHX XM HW	AD MTM	-	-	-
MHX XNT or MHX MXNT	AD XTM 9	MHX XNPT	-	-
MHX XNT or MHX MXNT	AD XTM 9	MHX XNPT	MHX ICE	MHX XMK
MHX XNT or MHX MXNT	AD XTM 9	-	-	-
MHX HS	AD STM 7	-	-	-
MHX XNT or MHX MXNT	AD XTM 9	MHX XNPT	-	MHX XMK DI
MHX XNT or MHX MXNT	AD XTM 9	MHX XNPT	-	MHX XMK DI
MHX XM HW	AD MTM HW MSI	-	-	-
MHX XM HW	AD MTM HW MDI	-	-	-
MHX XNT or MHX MXNT	AD XTM 9	-	-	-
MHX XNT or MHX MXNT	AD XTM 9	MHX XNPT	-	MHX XMK DI
MHX XNT or MHX MXNT	AD XTM 9	MHX XNPT	-	MHX XMK
MHX XNT or MHX MXNT	AD XTM 9	MHX XNPT	-	MHX XMK DI
MHX XM HW	AD MTM	-	-	-

EC M10   EC M30	9 M SIDB Y	9 M SILR Y
EC M10   EC M30	-	-
EC M10   EC M30	9 M SIDB Y	9 M SILR Y
EC M10   EC M30	-	-
EC M10   EC M30	9 M SIDB Y	9 M SILR Y
EC M10   EC M30	9 M SIDB Y	9 M SILR Y
EC M10   EC M30	-	-
EC M10   EC M30	9 M SIDB Y	9 M SILR Y
EC M10   EC M30	-	-
EC M10   EC M30	9 M SIDB Y	9 M SILR Y
EC M10   EC M30	-	-
EC M10   EC M30	9 M SIDB Y	9 M SILR Y
EC M10   EC M30	-	-
EC M10   EC M30	-	-
EC M3 14W10   EC M3 14W30	14 M ID SIDB Y	14 M ID SILR Y
EC M3 14W10   EC M3 14W30	-	-
EC M3 14W10   EC M3 14W30	-	-
EC M3 14W10   EC M3 14W30	-	-
EC M3 14W10   EC M3 14W30	-	-
EC M3 14W10   EC M3 14W30	-	-
EC M3 14W10   EC M3 14W30	14 M ID SIDB Y	14 M ID SILR Y

## STAINLESS STEEL THRU-HULL MEGA SIDE IMAGING TRANSDUCER

Reach greater depths with greater clarity. Built to withstand harsh saltwater conditions, this stainless steel thru-hull transducer delivers crisp returns for MEGA Side Imaging and MEGA Down Imaging, as well as Dual Spectrum CHIRP when connected with a compatible Humminbird control unit.

Includes: fairing block and mounting hardware.

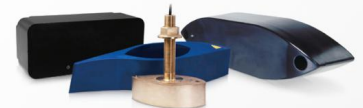
### Compatible Models

APEX (all models)  
SOLIX MSI (G3/G2 models)



## AIRMAR CHIRP TRANSDUCERS

Take advantage of the full capability of APEX, SOLIX and HELIX's CHIRP Digital Sonar with Airmar CHIRP transducers. Durable, precise and innovative, these industry-leading transducers are available through your dealer. For more information, talk to your dealer or visit [AirmarTechnology.com](http://AirmarTechnology.com).



# MEGA LIVE IMAGING

Bring the must-watch detail and non-stop action of MEGA Live Imaging to a fish finder near you. MEGA Live is compatible with all APEX, SOLIX and select HELIX Series models. New mounting options give you added flexibility in how you attach and control the three-position MEGA Live transducer.



## COMPATIBLE MODELS

- » APEX (all models)
- » SOLIX (all models)
- » HELIX 7-15 G4N models with MEGA Imaging
- » HELIX 8-12 G3N models with MEGA Imaging



# MEGA 360 IMAGING

Upgrading to incredible 360-degree views is as simple as adding the MEGA 360 Imaging transducer to your boat and connecting your Humminbird display with MEGA Imaging+. Universal and No Mount options give you the flexibility needed to put MEGA 360 Imaging on any boat, anywhere.



## COMPATIBLE MODELS

- » APEX (all models)
- » SOLIX (all models)
- » HELIX 8-15 G3N/G4N models with MEGA Imaging+



Some rigging configurations will require additional accessories, please see page 46 for more details.



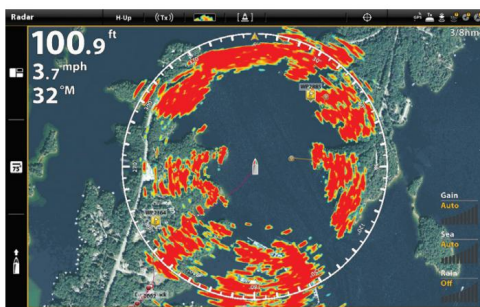
# CHIRP RADAR

Introducing the next generation of marine radar: CHIRP Radar, featuring CHIRP Pulse Compression. Setting a new standard for compact solid state radar, this technology delivers superior target separation on both long and extremely short ranges. This translates to better situational awareness in low-visibility conditions, and helps identify birds and floating obstacles for clues to where game fish are located. You can also track weather and vessels with amazing definition. Available for select Humminbird models with Ethernet-networking capabilities.

HB 2124 CHIRP RADAR  
#750013-1

Some compatible Humminbird models require additional adapter, listed below.

Models	Cables Required
APEX and SOLIX Series	Built-in
HELIX G2N/G3N/G4N Series	AS EC QDE (#720074-1)



Clearly identify this upcoming bridge with the precise imaging of Humminbird CHIRP Radar.

## SOLID STATE PERFORMANCE

Thanks to solid state technology, Humminbird radar is safe, reliable and lightweight. At 12.3 lbs, the radar unit weighs 50% less than traditional magnetron radars and offers safe emissions with a low power radar transmitter. It's also ready to use in seconds, without a lengthy warm-up period.

## CHIRP PULSE COMPRESSION

Along with excellent short-range detection (18 foot minimum range), CHIRP Pulse Compression ensures more energy reaches each target for superior imaging at long ranges up to 24 nautical miles. CHIRP Pulse Compression identifies small or weak targets, even while positioned close to strong returns.

## SUPERIOR RADAR IMAGING

See things more clearly with Humminbird CHIRP Radar. Shorelines, buoys, other boats and weather—watch it all take shape on your display for maximum safety and a competitive edge. Available for all networking models, advanced target separation displays targets with unsurpassed resolution and quality.

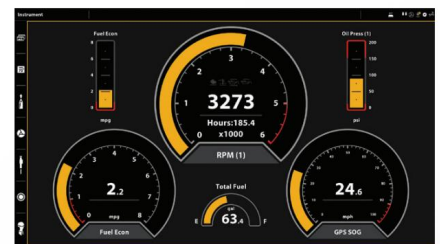
## SPECIFICATIONS

Antenna Dimension	21" Enclosed Dome
Antenna Type	Patch Array
Peak Power Output	20W
Transmit Frequency	9354 to 9446 MHz
Beamwidth (nominal)	4.9° Horizontal and 20° Vertical
Input Voltage	12 or 24 VDC (Min: 10.8V, Max: 31.2V)
Networking	Ethernet
Max. Range Scale	1/16 <sup>th</sup> to 24 nautical miles
Power Consumption	Transmit Mode 17W, Standby Mode 7W
Duplexer	Circulator
Pulse Widths (3dB)	40 ns to 14.7 μs
CHIRP Lengths	400 ns to 20 μs
CHIRP Bandwidth	Up to 32 MHz
IF Bandwidth	26 MHz
Noise	Less than 4dB
Polarization	Horizontal
Weight	5.6 kg (12.3 lb)
Waterproofing	IPX6



# NMEA 2000

Boat performance, weather or water conditions—make sense of it all with NMEA 2000 networking on your Humminbird fish finder. Display and easily interpret virtually any NMEA 2000 sensor with intuitive, high-color graphics and text. You can even view data for multiple engines and fuel tanks. Easily customize data boxes to suit your needs. Focus on a single reading or view multiple gauges at once for a more complete picture. Plug your NMEA 2000 network cable directly into all APEX, SOLIX and HELIX G4N models.



HB N2K SINGLE STARTER KIT M  
#700064-1

HB N2K DUAL STARTER KIT M (shown)  
#700065-1



### Drop Cables and Connectors

HB N2K Drop Cable 0.5M M	#720117-2
HB N2K Drop Cable 2M M	#720117-2 (shown)
HB N2K Drop Cable 5M M	#720117-3
HB N2K Drop Cable 10M M	#720117-4
HB N2K Power T M	#760037-1
HB N2K T-Connector M	#760038-1
HB N2K Terminator Female M	#700035-1
HB N2K Terminator Male M	#700036-1



### Cables

AS QD NMEA 2000 (needed to adapt NMEA 2000 drop cable into quick-disconnect cable for HELIX G4N models)	#720114-1
AS NMEA (APEX adapter cable for NMEA 0183 accessory)	#720116-1 (shown)



# ETHERNET NETWORKING

## ETHERNET CABLES

Quickly set up an Ethernet connection between two Humminbird Ethernet-capable units. Available in five lengths—you select the length you need.

- AS EC 5E (5 FT)  
#720073-6
- AS EC 10E (10 FT)  
#720073-2
- AS EC 15E (15 FT)  
#720073-5
- AS EC 20E (20 FT)  
#720073-3
- AS EC 30E (30 FT)  
#720073-4



## ETHERNET ADAPTER CABLE

Allows Ethernet connection to HELIX 15/12/10/9/8/7, Ethernet-ready select 800/900/1100 Series and 700 HD Series units. Cable is 12 inches long.

- AS EC QDE  
(12 IN)  
#720074-1



## ETHERNET EXTENSION CABLE

Easily extend the reach of your Ethernet connection with this 30-foot cable.

- AS ECX 30E  
(30 FT)  
#760025-1



## CONNECTION CHART

### STEP 1

Find the group numbers for the two models you plan to network.

GROUP 1	GROUP 2	GROUP 3	
APEX Series SOLIX Series	HELIX 15 Series HELIX 12 Series HELIX 10 Series HELIX 9 Series HELIX 8 Series HELIX 7 G2N/G3N/G4N Series	1199ci HD 1159ci HD DI 1159ci HD 999ci HD 959ci HD DI	959ci HD 899ci HD 859ci HD DI 859ci HD

### STEP 2

Cross reference the group numbers to find the required cables to network your models.

SECOND MODEL TO NETWORK				
	1	2	3	
FIRST MODEL TO NETWORK	1	Ethernet Cable	Ethernet Cable plus (1) AS EC QDE	Ethernet Cable plus (1) AS EC QDE
	2	Ethernet Cable plus (1) AS EC QDE	Ethernet Cable plus (2) AS EC QDE	Ethernet Cable plus (2) AS EC QDE
	3	Ethernet Cable plus (1) AS EC QDE	Ethernet Cable plus (2) AS EC QDE	Ethernet Cable plus (2) AS EC QDE

## DUAL HELIX STARTER KITS

Bring it all together with these quick and easy kits. Everything you need to network two Ethernet-equipped HELIX models on your fiberglass or aluminum boat is in each kit. Connect the included in-hull or transom mount Dual Spectrum CHIRP transducer to an existing Side/Down Imaging transducer using the enclosed splitter cable. Also included is an adapter cable to connect compatible HELIX 8, 9, 10, 12, 15 MEGA Imaging units to select Minn Kota motors with built-in MEGA Down Imaging.

- DUAL HELIX STARTER KIT  
HWAL MI - TRANSOM (shown)  
#700062-1

- DUAL HELIX STARTER KIT  
HWFG MI - IN-HULL  
#700063-1



## 5-PORT ETHERNET SWITCH

Easily create a network using Ethernet-capable Humminbird fish finders. This waterproof, plug-and-play switch allows you to connect up to five Ethernet-based components. Some Sonar/GPS models require an additional adapter (see list to the right).



- AS ETH 5PXG  
#408450-1

Models	Cables Required
APEX and SOLIX Series	AS EC 5/10/15/20/30E*
HELIX 15, 12, 10, 9, 8 Series	AS EC 5/10/15/20/30E plus AS EC QDE
HELIX 7 G2N/G3N/G4N Series	AS EC 5/10/15/20/30E plus AS EC QDE

\* (1) Ethernet cable required to connect each networking fish finder (see Connection Chart above)

## POWER CABLES

Cables come in standard six-foot lengths, but can be extended with 18awg multi-strand wire. Connect power to a fuse panel, or through inline fuse holder (not included) if hooked directly to the battery.

Models	Cables
APEX Series and MEGA Live	PC 13
SOLIX Series	PC 12
HELIX 15, 12, 10, 9, 8, 7, 5 Series	PC 11 (Recommended for all Down Imaging and Side Imaging products) PC HELIX 12V DC (Not intended for permanent installation)
HELIX 7, 5 Series	PC 10 PC HELIX 12V DC (Not intended for permanent installation)
MEGA 360	PC MEGA 360

- PC 13  
#720110-1

- PC MEGA 360  
#720118-1

- PC 12 OR  
#720085-1

- PC 11  
#720057-1

- PC 10  
#720002-1

- PC HELIX 12V DC  
#720105-1



## EXTERNAL GPS MODULES

Choose from two external GPS solutions. The AS GRP provides fast and precise position fixes accurate within 8.2 feet, even in lower signal areas. With an integrated heading sensor, the AS GPS HS lets you see compass information and your boat's orientation while moving or sitting still.

Some Humminbird models require additional accessories, see below.

Models	Accessories Required
APEX Series	AS GPS cable required to connect external GPS module
SOLIX Series	AS GPS NMEA cable required to connect external GPS module
HELIX 15, 12, 10, 9, 8 Series	N/A
HELIX 7 G2N/G3N/G4N Series	N/A

- AS GPS HS  
#408400-1
- AS GRP  
#408920-1



# AUTOPILOT ACCESSORIES

Never deviate from your route with the precise control and proven performance of your Humminbird AutoPilot™ system. Easily navigate the SC 110 User Interface thanks to intuitive keys and menus, and a full-color, sunlight-readable display. This rugged pilot features advanced steering-control technology that holds its course even in high winds. Let it take the helm with total confidence, whatever the sea's conditions.



SC 110  
#409100-1



SCP 110  
#408180-1



HHRP 17-12  
#408350-1

SC 110  
AUTOPILOT  
KIT (shown)  
#400052-1



FXC 110  
#408210-1



HHRP 11-12  
(shown)  
#408340-1

SC 110 KIT  
W/O FB  
(rudder  
feedback not  
included)  
#400053-1



SCP  
CABLE 30  
#720077-1



FB 30  
#408150-1



# MOUNTING HARDWARE / COVERS / CASES



**UNIT MOUNTS**  
Use for a second mounting location on your boat or as a great replacement for a worn original.

**MOUNTING KNOBS**  
Use for gimbal bracket units.

**IN-DASH MOUNTING KITS**  
Rugged in-dash mounting kits let you panel-mount your Humminbird for a fully integrated appearance. Includes all mounting hardware.

**UNIT COVERS**  
Cover protects your Humminbird for storage. Hard plastic or neoprene covers depending on model.

**CARRYING CASES**  
Protect your ICE Series flasher with one of these rugged cases featuring plenty of space for the unit, mount and other accessories.

**PORTABLE CASE CONVERSION KIT**  
Portable conversion kits provide a rugged protective case with internal battery compartment and all the hardware needed to convert your Humminbird for portable use.

## SERIES

SERIES	UNIT MOUNTS	MOUNTING KNOBS	IN-DASH MOUNTING KITS	UNIT COVERS	CARRYING CASES	PORTABLE CASE CONVERSION KIT
APEX 19 Series	GM A19	—	IDMK RM A19 or IDMK FM APX	UC A19	—	—
APEX 16 Series	GM A16	—	IDMK RM A16 or IDMK FM APX	UC A16	—	—
APEX 13 Series	GM A13	—	IDMK RM A13 or IDMK FM APX	UC A13	—	—
SOLIX 15 Series	GM S15	MKH 5	IDMK S15R	UC S15	—	—
SOLIX 12 Series	GM S12	MKH 5	IDMK S12R	UC S12	—	—
SOLIX 10 Series	GM S10	MKH 5	IDMK S10R	UC S10	—	—
HELIX 15 Series	GM H15	—	IDMK H15	UC H15	—	—
HELIX 12 Series	GM H12	MKH HL	IDMK H12R	UC H12	—	—
HELIX 10 G1 Series	GM H910	MKH HL	IDMK H910R	UC H910	—	—
HELIX 10 G2N/G3N/G4N Series	GM H910	MKH HL	IDMK H910R	UC H910	—	HELIX ICE CNVRSN KIT
HELIX 9 G1/G2N Series	GM H910	MKH HL	IDMK H910R	UC H910	—	HELIX ICE CNVRSN KIT
HELIX 9 G3N/G4N Series	GM H910	MKH HL	IDMK H89R	UC H89	—	HELIX ICE CNVRSN KIT
HELIX 8 Series	GM H910	MKH HL	IDMK H89R	UC H89	—	HELIX ICE CNVRSN KIT
HELIX 7 G1 Series	GM H7	MKH HS	IDMK H7R	UC H7R2	—	ICE PTC XI 9 20 H57, PTC U2 or PTC UNB2
HELIX 7 G2/G3/G4/G2N/G3N Series	GM H7	MKH HS	IDMK H7R	UC H7R2	—	HELIX ICE CNVRSN KIT, PTC U2 or PTC UNB2
HELIX 7 G4N Series	GM H7R2	MKH HS	IDMK H7R2	UC H7R2	—	HELIX ICE CNVRSN KIT, PTC U2 or PTC UNB2
HELIX 5 G1 Series	GM H5	MKH HS	IDMK H5	UC H5	—	ICE PTC XI 9 20 H57, PTC U2 or PTC UNB2
HELIX 5 G2 Series	GM H5	MKH HS	IDMK H5	UC H5	—	ICE PTC CHIRP H5 FB, PTC U2 or PTC UNB2
ICE 35, 45, 55	—	MKH 2	—	—	CC ICE	—
ICE HELIX 5 G2/G3 Series	GM H5	MKH ICE H5 FB	IDMK H5	UC H5	—	ICE PTC CHIRP H5 FB, PTC U2 or PTC UNB2
ICE HELIX 7 G2/G3 Series	GM H7	MKH ICE H7 FB	IDMK H7R	UC H7R2	—	HELIX ICE CNVRSN KIT, PTC U2 or PTC UNB2
ICE HELIX 7 G4 Series	GM H7	MKH 5	IDMK H7R	UC H7R2	—	HELIX ICE CNVRSN KIT, PTC U2 or PTC UNB2

# BOAT RIGGING GUIDE

Here are some examples for configuring your One-Boat Network. For more, visit [Humminbird.com/Support/Installation-Diagrams](http://Humminbird.com/Support/Installation-Diagrams).

■ NMEA 0183  
 ■ Ethernet  
 ■ 12V DC Power  
 ■ Transducer Cable  
 ■ Bluetooth® Signal

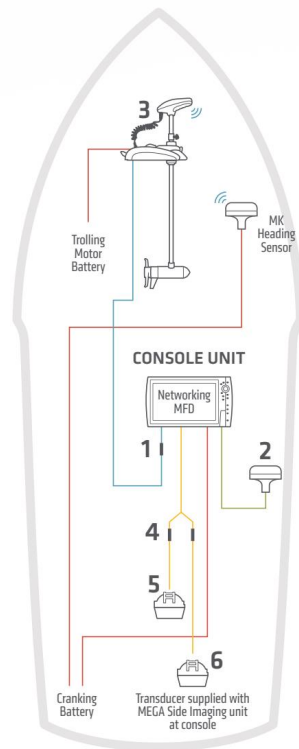
## SALTWATER INSTALLATION 1

Minn Kota Riptide trolling motor with i-Pilot Link and (1) console-mounted Humminbird unit, with heading sensor GPS puck and high-speed transducer with y-cable.

HELIX SERIES	APEX/SOLIX SERIES
1 Ethernet Adapter Cable AS EC QDE   #720074-1	Ethernet Adapter Cable N/A
2 GPS + Heading Sensor AS GPS HS   #408400-1	GPS + Heading Sensor APEX: AS GPS HS   #408400-1 AS GPS   #720113-1 SOLIX: AS GPS HS   #408400-1 AS GPS NMEA   #720080-1
3 Minn Kota Trolling Motor with i-Pilot Link*	Minn Kota Trolling Motor with i-Pilot Link*
4 Transducer Splitter Cable 9 M SIDB Y   #720101-1	Transducer Splitter Cable 14 M ID SIDB Y   #720111-1
5 High Speed Transducer (fiberglass hull) XP 9 HW T   #710276-1 High Speed Transducer (aluminum hull) XNT 9 HW T   #710274-1	High Speed Transducer (fiberglass hull) XP 14 HW T   #710287-1 High Speed Transducer (aluminum hull) XNT 14 HW T   #710285-1 Optional Transducer Airmar CHIRP Transducer
6 Optional Transducer (thru-hull) S5TH 14 HW MSI+ T   #710302-1 MKR-MI-1 HB   #1852088	Optional Transducer (thru-hull) S5TH 14 HW MSI+ T   #710302-1

\*One (1) AS EC 30E 30 ethernet cable included with trolling motor.

The accessories and part numbers listed above are valid as of November 2022. Installations shown are for HELIX G3N/G4N and APEX/SOLIX G2/G3 networking models and Minn Kota trolling motors with i-Pilot Link.



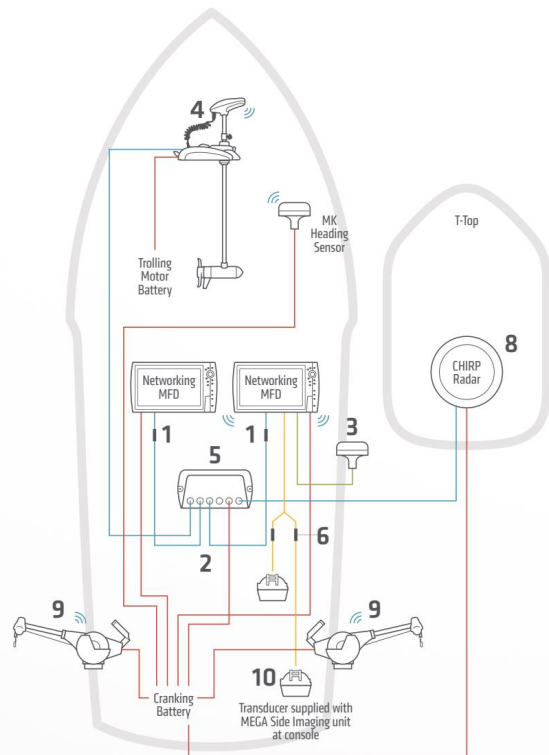
## SALTWATER INSTALLATION 3

Minn Kota Riptide trolling motor with i-Pilot Link, (2) console-mounted Humminbird units, Humminbird CHIRP radar, Cannon Optimum Downriggers, with heading sensor GPS puck and high-speed transducer with y-cable.

HELIX SERIES	APEX/SOLIX SERIES
1 Ethernet Adapter Cable (Need 2) AS EC QDE   #720074-1	Ethernet Adapter Cable N/A
2 Ethernet Cable (Need 2) AS EC 5E (5')   #720073-6 AS EC 10E (10')   #720073-2 AS EC 15E (15')   #720073-5 AS EC 20E (20')   #720073-3 AS EC 30E (30')   #720073-4	Ethernet Cable (Need 2) AS EC 5E (5')   #720073-6 AS EC 10E (10')   #720073-2 AS EC 15E (15')   #720073-5 AS EC 20E (20')   #720073-3 AS EC 30E (30')   #720073-4
3 GPS + Heading Sensor AS GPS HS   #408400-1	GPS + Heading Sensor APEX: AS GPS HS   #408400-1 AS GPS   #720113-1 SOLIX: AS GPS HS   #408400-1 AS GPS NMEA   #720080-1
4 Minn Kota Trolling Motor with i-Pilot Link*	Minn Kota Trolling Motor with i-Pilot Link*
5 5-Port Ethernet Switch AS ETH 5PXG   #408450-1	5-Port Ethernet Switch AS ETH 5PXG   #408450-1 Note: Networks exclusively with APEX units do not require 5-Port Ethernet Switch
6 Transducer Splitter Cable 9 M SIDB Y   #720101-1	Transducer Splitter Cable 14 M ID SIDB Y   #720111-1
7 High Speed Transducer (fiberglass hull) XP 9 HW T   #710276-1 High Speed Transducer (aluminum hull) XNT 9 HW T   #710274-1	High Speed Transducer (fiberglass hull) XP 14 HW T   #710287-1 High Speed Transducer (aluminum hull) XNT 14 HW T   #710285-1 Optional Transducer Airmar CHIRP Transducer
8 Radar HB 2124 CHIRP Radar   #750013-1	Radar HB 2124 CHIRP Radar   #750013-1
9 Optimum TS Downriggers (Need 2) Optimum TS   #1902340	Optimum TS Downriggers (Need 2) Optimum TS   #1902340
10 Optional Transducer (thru-hull) S5TH 14 HW MSI+ T   #710302-1 MKR-MI-1 HB   #1852088	Optional Transducer S5TH 14 HW MSI+ T   #710302-1

\*One (1) AS EC 30E 30 ethernet cable included with i-Pilot Link trolling motor.

The accessories and part numbers listed above are valid as of November 2022. Installations shown are for HELIX G3N/G4N and APEX/SOLIX G2/G3 networking models and Minn Kota trolling motors with i-Pilot Link.



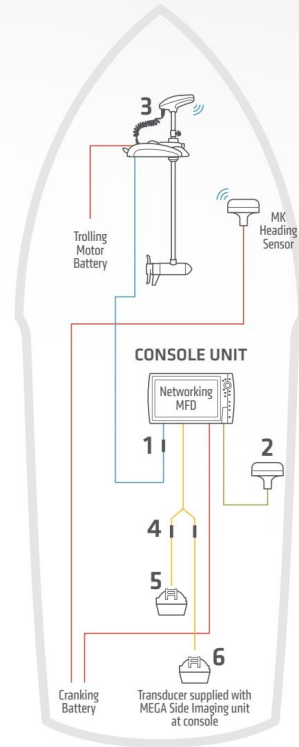
## SALTWATER INSTALLATION 2

Minn Kota Riptide trolling motor with i-Pilot Link and (2) console-mounted Humminbird units, with heading sensor GPS puck and high-speed transducer with y-cable.

HELIX SERIES	APEX/SOLIX SERIES
1 Ethernet Adapter Cable (Need 2) AS EC QDE   #720074-1	Ethernet Adapter Cable N/A
2 Ethernet Cable (Need 2) AS EC 5E (5')   #720073-6 AS EC 10E (10')   #720073-2 AS EC 15E (15')   #720073-5 AS EC 20E (20')   #720073-3 AS EC 30E (30')   #720073-4 AS ECX 30E (30')   #760025-1	Ethernet Cable (Need 2) AS EC 5E (5')   #720073-6 AS EC 10E (10')   #720073-2 AS EC 15E (15')   #720073-5 AS EC 20E (20')   #720073-3 AS EC 30E (30')   #720073-4 AS ECX 30E (30')   #760025-1
3 GPS + Heading Sensor AS GPS HS   #408400-1	GPS + Heading Sensor APEX: AS GPS HS   #408400-1 AS GPS   #720113-1 SOLIX: AS GPS HS   #408400-1 AS GPS NMEA   #720080-1
4 Minn Kota Trolling Motor with i-Pilot Link*	Minn Kota Trolling Motor with i-Pilot Link*
5 5-Port Ethernet Switch AS ETH 5PXG   #408450-1	5-Port Ethernet Switch AS ETH 5PXG   #408450-1 Note: Networks exclusively with APEX units do not require 5-Port Ethernet Switch
6 High Speed Transducer (fiberglass hull) XP 9 HW T   #710276-1 High Speed Transducer (aluminum hull) XNT 9 HW T   #710274-1	High Speed Transducer (fiberglass hull) XP 14 HW T   #710287-1 High Speed Transducer (aluminum hull) XNT 14 HW T   #710285-1 Optional Transducer Airmar CHIRP Transducer
7 Transducer Splitter Cable 9 M SIDB Y   #720101-1	Transducer Splitter Cable 14 M ID SIDB Y   #720111-1
8 Minn Kota Talon/Raptor with Bluetooth Talon SWA	Minn Kota Talon/Raptor with Bluetooth Talon SWA
9 Optional Transducer (thru-hull) S5TH 14 HW MSI+T   #710302-1 MKR-MI-1 HB   #1852088	Optional Transducer (thru-hull) S5TH 14 HW MSI+T   #710302-1

\*One (1) AS EC 30E 30 ethernet cable included with trolling motor.

The accessories and part numbers listed above are valid as of November 2022. Installations shown are for HELIX G3N/G4N and APEX/SOLIX G2/G3 networking models and Minn Kota trolling motors with i-Pilot Link.



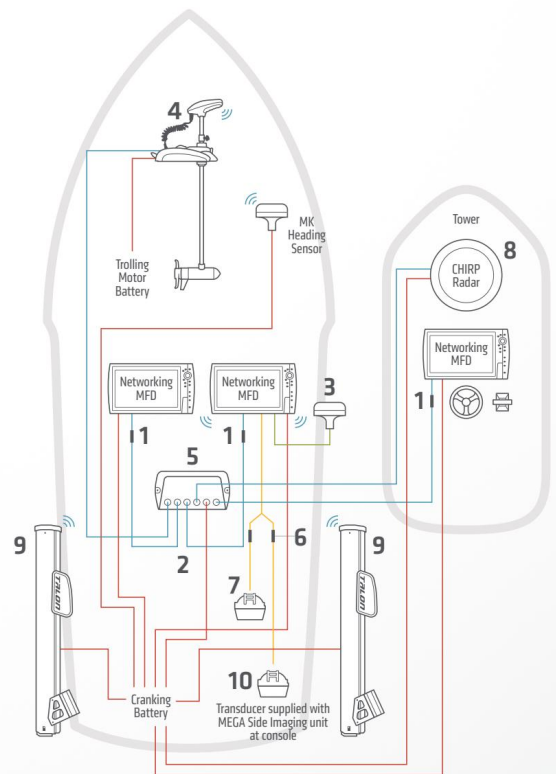
## SALTWATER INSTALLATION 4

Minn Kota Riptide trolling motor with i-Pilot Link, (2) console-mounted Humminbird units, (1) Humminbird unit at second station, Humminbird CHIRP radar and Talon Shallow Water Anchors.

HELIX SERIES	APEX/SOLIX SERIES
1 Ethernet Adapter Cable (Need 3) AS EC QDE   #720074-1	Ethernet Adapter Cable N/A
2 Ethernet Cable (Need 3) AS EC 5E (5')   #720073-6 AS EC 10E (10')   #720073-2 AS EC 15E (15')   #720073-5 AS EC 20E (20')   #720073-3 AS EC 30E (30')   #720073-4	Ethernet Cable (Need 3) AS EC 5E (5')   #720073-6 AS EC 10E (10')   #720073-2 AS EC 15E (15')   #720073-5 AS EC 20E (20')   #720073-3 AS EC 30E (30')   #720073-4
3 GPS + Heading Sensor AS GPS HS   #408400-1	GPS + Heading Sensor APEX: AS GPS HS   #408400-1 AS GPS   #720113-1 SOLIX: AS GPS HS   #408400-1 AS GPS NMEA   #720080-1
4 Minn Kota Trolling Motor with i-Pilot Link*	Minn Kota Trolling Motor with i-Pilot Link*
5 5-Port Ethernet Switch AS ETH 5PXG   #408450-1	5-Port Ethernet Switch AS ETH 5PXG   #408450-1 Note: Networks exclusively with APEX units do not require 5-Port Ethernet Switch
6 Transducer Splitter Cable 9 M SIDB Y   #720101-1	Transducer Splitter Cable 14 M ID SIDB Y   #720111-1
7 High Speed Transducer (fiberglass hull) XP 9 HW T   #710276-1 High Speed Transducer (aluminum hull) XNT 9 HW T   #710274-1	High Speed Transducer (fiberglass hull) XP 14 HW T   #710287-1 High Speed Transducer (aluminum hull) XNT 14 HW T   #710285-1 Optional Transducer Airmar CHIRP Transducer
8 Radar HB 2124 CHIRP Radar   #750013-1	Radar HB 2124 CHIRP Radar   #750013-1
9 Minn Kota Talon/Raptor with Bluetooth (Need 2) Talon SWA	Minn Kota Talon/Raptor with Bluetooth (Need 2) Talon SWA
10 Optional Transducer (thru-hull) S5TH 14 HW MSI+T   #710302-1 MKR-MI-1 HB   #1852088	Optional Transducer (thru-hull) S5TH 14 HW MSI+T   #710302-1

\*One (1) AS EC 30E 30 ethernet cable included with i-Pilot Link trolling motor.

The accessories and part numbers listed above are valid as of November 2022. Installations shown are for HELIX G3N/G4N and APEX/SOLIX G2/G3 networking models and Minn Kota trolling motors with i-Pilot Link.





**HUMMINBIRD  
TECHNICAL SUPPORT**

678 Humminbird Lane  
Eufaula, AL 36027  
Toll Free: (800) 633-1458  
Fax: (855) 342-2563

**DEALER AND  
DISTRIBUTOR SERVICE**

555 Main Street, Suite 241  
Racine, WI 53403  
Toll Free: (800) 493-6686  
Fax: (800) 451-0387  
Fax: (262) 631-6509

**JOHNSON OUTDOORS INC.  
CANADA**

4180 Harvester Road  
Burlington, Ontario L7L 6B6  
Phone: (905) 634-0023  
Fax: (905) 634-0261

AutoChart, Camco, CoastMaster, Cross Tech, Down Imaging, Forrester, HELIX, Humminbird, LakeMaster, Maxum, MECA 360 Imaging, MECA Down Imaging, MECA Imaging, MECA Side Imaging, Minn Kota, One-Boat Network, ONIX, Side Imaging, SOLIX and Ulterra are registered trademarks of Johnson Outdoors Marine Electronics, Inc.  
APEX, AutoPilot, FishSmart, i-Pilot, Link, MECA, Down Imaging+, MECA Imaging+, MECA Live Imaging, MECA Side Imaging+, Optimum, Sport-Lock, Target-Lock and Ulterra are trademarks of Johnson Outdoors Marine Electronics, Inc.  
Apple is a trademark of Apple Inc., registered in the U.S. and other countries. App Store is a service mark of Apple Inc., registered in the U.S. and other countries. Google Play and the Google Play logo are trademarks of Google Inc. HotKeys is a trademark of Navionics, Inc. and Navionics S.P.A. Navionics is a registered trademark of Navionics, Inc. NMEA 2000 is a registered trademark of NMEA. RMM is a registered trademark of National Products, Inc. The Bluetooth™ word mark and logo are registered trademarks owned by Bluetooth™ SIG, Inc.  
Specifications are subject to change without notice.

©2023 Johnson Outdoors Marine Electronics, Inc. All Rights Reserved.



Johnson Outdoors Marine Electronics, Inc. | 678 Humminbird Lane | Eufaula, AL 36027

[HUMMINBIRD.COM](http://HUMMINBIRD.COM)

